

# Look around

Architectural  
inspiration, design  
trends and  
practical solutions  
to inspire - brought  
to you by  
James Hardie

Pre-Cladding

External Cladding

Internal Lining

Eaves & Soffits



# Welcome, you're in for a real treat

---



Thanks for taking a look through our product range. We're confident we've got a solution for you. Whether you're embarking on a whole new build, or renovating your existing home, we've got a range of tough and beautiful products for you.

So relax, grab yourself a cuppa and prepare to be inspired.



# Contents

---

## Pre-Cladding

HomeRAB® Pre-Cladding

## Cladding

Cladding Combinations

Linea® Weatherboard

Linea® Oblique Weatherboard

Stria® Cladding

Axon® Panel

Titan® Facade Panel

James Hardie® Weatherboard

EasyLap™ Panel

## Linings

Outdoor-indoor flow

HardieGroove™ Lining

HardieGlaze™ Lining

## Soffits

Eclipsa™ Eaves Lining

HardieGroove™ Soffit Lining

Your home is the biggest investment of your life. At James Hardie, we develop solutions to help make that investment a sound one.

# HomeRAB<sup>®</sup>

PRE-CLADDING

## First things first...

We've worked closely with many of New Zealand's builders and architects to bring you HomeRAB Pre-Cladding; a rigid underlay that prevents moisture entering your home, keeping you and your family healthy.

HomeRAB Pre-Cladding replaces commonly used flexible underlays and has been developed to withstand the unique, and often harsh, New Zealand weather conditions. It eliminates draughts and reduces noise entering your home. HomeRAB Pre-Cladding keeps the elements outside, so you get that cosy feeling inside.

- **Eliminates draughts and acts as a barrier to wind and noise**
- **Designed to meet New Zealand's harsh climatic conditions and the New Zealand Building Code**
- **Can be left exposed for up to 90 days in the building process, giving more time to perfect your cladding**
- **Suitable for use under all cladding types**



“Through advanced engineering and fibre cement technology, HomeRAB Pre-Cladding acts as your home’s second line of defence, keeping your home dry and minimising draughts and noise.”

**MANJINDER SINGH, ENGINEER**





Linea



# Cladding

---

Pick the perfect colour.

Whatever look you're searching for, our range of claddings fit the bill. Each of our claddings are created using fibre cement; a very durable and hard-wearing alternative to other materials such as timber.

Our range offers both horizontal and vertical looks, as well as a range of widths so you can create your own personalised style.

One of the best things about James Hardie cladding is that unlike other products you can paint it any colour you like, it won't warp or rot, meaning you spend less time maintaining your home, and more time enjoying it.



# Cladding Combinations

---

## Choose your style.

Using a variety of James Hardie cladding products gives you the flexibility to combine contrasting vertical and horizontal lines for a contemporary look and feel.

For example, Titan® Facade Panel or Stria® Cladding work beautifully with Linea® Weatherboard, giving you the opportunity to create clean, crisp feature walls.



“We made a great decision mixing Linea Weatherboard and Stria Cladding. The contrast works perfectly.”

DUNCAN & EMILY WILSON, HOMEOWNERS



# Linea<sup>®</sup>

WEATHERBOARD



## Classic lines that stand the test of time.

Durable Linea Weatherboard is a versatile cladding option with horizontal lines that reflect traditional New Zealand home design.

We've developed a top quality product without compromise, trusted by builders and architects throughout the country. Linea Weatherboard is an advanced, low maintenance alternative to timber and has been used to clad over 100,000 stylish Kiwi homes since 2001.

- **Unique jointing system means there's no need for unsightly front soakers**
- **Durable and resistant to damage from moisture, rot and fire**
- **Can be painted any colour**
- **25 year product warranty**

Width options



Corner options





Linea

“Linea Weatherboard has a huge popularity with our clients due to its durability and aesthetics.”

**SCOTTY VILE, HOME BUILDER**

# Linea<sup>®</sup>

## OBLIQUE WEATHERBOARD

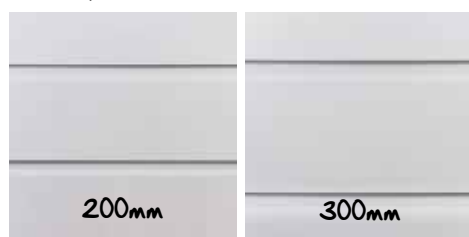


# Linea Oblique Horizontal. Your Style, Your Way.

Linea Oblique Weatherboard shares all of Linea Weatherboard's performance and structural benefits.

The design flexibility of Linea Oblique Weatherboard allows the creation of classic or contemporary looks using either width option, or a combination of both widths.

Width options



- Available in two widths – 200mm and 300mm
- A range of jointing options available to suit your style
- Durable and resistant to damage from moisture, rot and fire
- Can be painted any colour
- 25 year product warranty

Find out more at [jameshardie.co.nz](http://jameshardie.co.nz)

“With Linea Oblique Weatherboard you can use a mix of wide and narrow boards, which adds another level of interest to the home.”

**MATT MACKAY, HOME BUILDER**

*Linea Oblique*



# Linea<sup>®</sup>

## OBLIQUE WEATHERBOARD

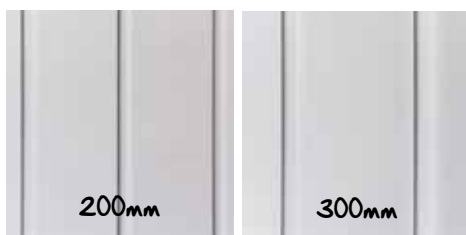


# Linea Oblique Vertical. Your Style, Your Way.

The strong vertical lines of Linea Oblique Weatherboard provide asymmetric negative details – ideal for contemporary designs.

Linea Oblique Weatherboard allows you to achieve unique shadow line details by mixing the widths, providing a superior alternative to vertical timber shiplap.

Width options



- Available in two widths – 200mm and 300mm

- Durable and resistant to damage from moisture, rot and fire

- Can be painted any colour

- 25 year product warranty

Find out more at [jameshardie.co.nz](http://jameshardie.co.nz)





Linea Oblique

“We feel the product represents absolute peace of mind for our client.”

ROSS THOMAS, HOME BUILDER

## A contemporary look to set your home apart.

The wide smooth panel and crisp clean lines of Stria Cladding make a bold statement when fully cladding your contemporary home. Or for a more dramatic look, Stria Cladding looks great as a feature wall.

Architects and designers often use the solid masonry look of Stria Cladding to provide contrast to other more classic James Hardie claddings.

- Flexibility to create a distinctive solid masonry look
- Durable and resistant to damage from moisture, rot and fire
- Can be painted any colour
- 15 year product warranty



“The key drivers behind our exterior cladding choice was the added durability of James Hardie fibre cement, particularly in a harsh sea spray environment.”

**CRAIG DACKERS, HOME BUILDER**



# Axon<sup>®</sup>

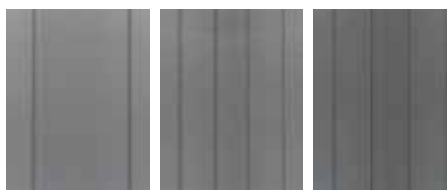
PANEL

## A pristine look that lasts and lasts.

Whether you're looking to draw interest to a feature wall, or complement your other cladding choices, Axon Panel's subtle lines bring character to your home. Axon Panel offers a versatile and affordable way to make your home yours.

- Distinctive vertical lines available in 133mm or 400mm groove spacing
- Available with a grain texture
- Durable and resistant to damage from moisture, rot and fire
- Can be painted any colour
- 15 year product warranty

Width options



Smooth  
400mm

Grained  
133mm

Smooth  
133mm



Find out more at [jameshardie.co.nz](https://www.jameshardie.co.nz)



Axon

“We just loved the vertical lines Axon Panel offered combined with the horizontal lines of Linea Weatherboard. It gave us the right look and durability for children.”

**SHARON & KEITH MASON, HOMEOWNERS**

# Titan<sup>®</sup>

FACADE PANEL

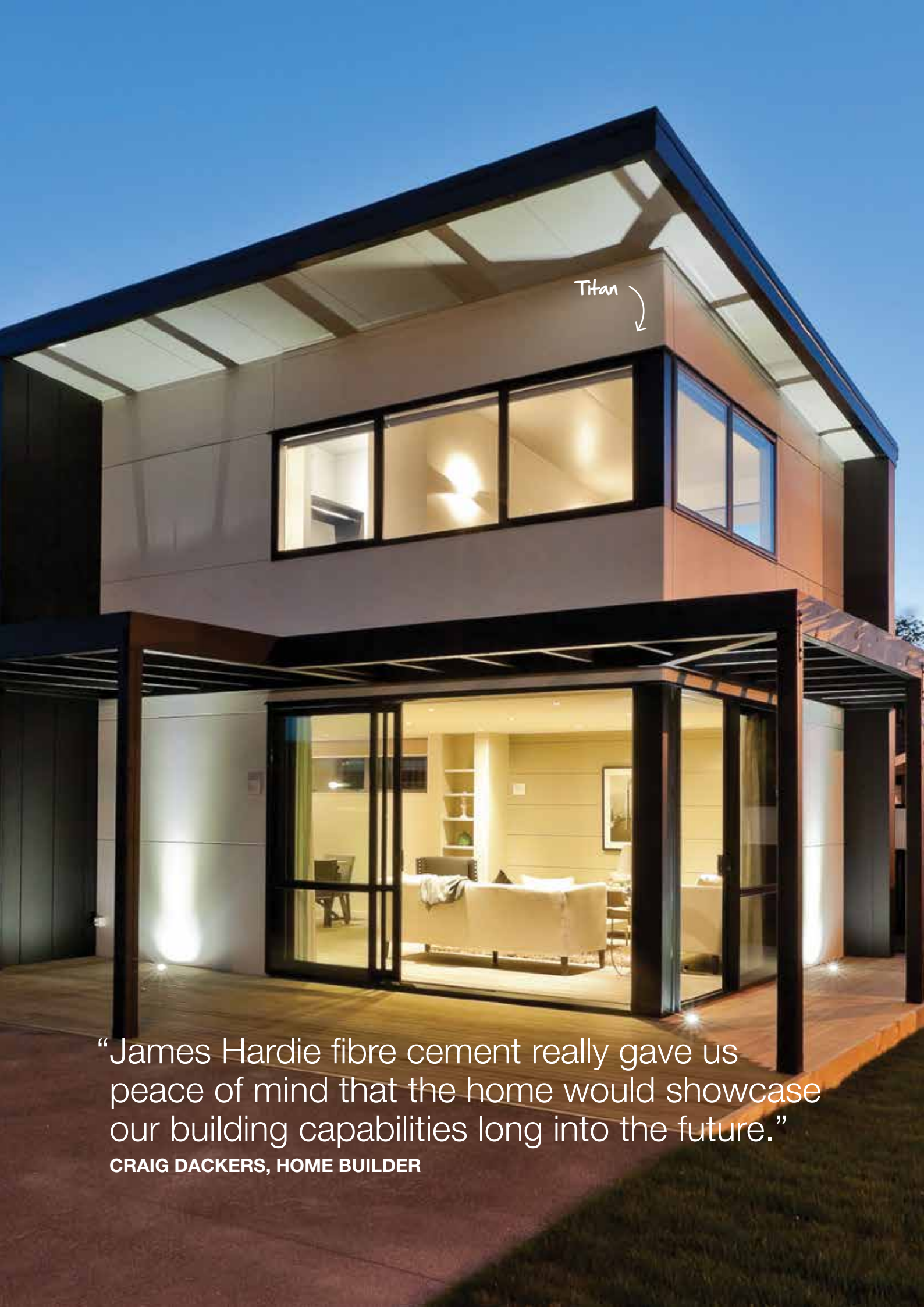
## Create your unique look.

Titan Facade Panel provides a smooth, clean, exterior finish. It gives you the flexibility to create a unique panelised look that's ideal for modern homes.

Titan Facade Panel was developed to provide scope for innovative architectural design whilst ensuring longevity.

- Create a unique panel look that contrasts nicely with Linea Weatherboard and Stria Cladding
- Expressed jointing gives you a three-dimensional look
- Durable and resistant to damage from moisture, rot and fire
- Can be painted any colour
- 15 year product warranty





Titan



“James Hardie fibre cement really gave us peace of mind that the home would showcase our building capabilities long into the future.”

**CRAIG DACKERS, HOME BUILDER**

# James Hardie®

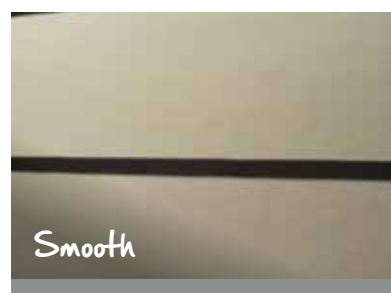
WEATHERBOARD



## It's good to be choosy.

Our Weatherboard range has three distinct designs; Frontier, Rusticated and Smooth, which suit a range of styles from contemporary to classic. James Hardie Weatherboard is an attractive cladding option, as well as being cost effective and low maintenance. Each Weatherboard style comes pre-primed and is suitable for paint or stain.

- **Cost-effective weatherboard solution**
- **Choose from three different profiles**
- **Durable and resistant to damage from moisture, rot and fire**
- **Can be painted any colour**
- **15 year product warranty**



Find out more at [jameshardie.co.nz](http://jameshardie.co.nz)



“James Hardie Weatherboard provides us with a cost-effective, durable weatherboard look which offers great aesthetics and reliability for our clients.”

**GRANT COUTTS, CONSTRUCTION MANAGER**

Smooth Weatherboard



# EasyLap™

PANEL



## Clean and versatile, your choice of smooth or textured.

EasyLap Panel is a broad sheet that provides a clean and robust look. The shiplap joint gives a subtle v-groove, bringing interest to a smooth wall.

The panel can be given a smooth or a textured finish, so you can choose a unique look for your home.

EasyLap Panel complements a range of other cladding products to create a contemporary composite design.

- **Large format smooth panel can be painted or finished with a texture of your choice**
- **Simple and cost effective solution for broad wall coverage**
- **Complements other James Hardie claddings for a modern composite design**
- **Resistant to fire and damage from moisture and rot**



EasyLap

“The product is backed by great customer service & technical support which helped us complete our project on time.”

**DUNCAN & EMILY WILSON, HOMEOWNERS**

# Bring the outside, in...

Have you ever thought about bringing the outside in? Not only can you enjoy the beauty and strength of our cladding systems on the exterior of your home but they look just as good on the inside, too.

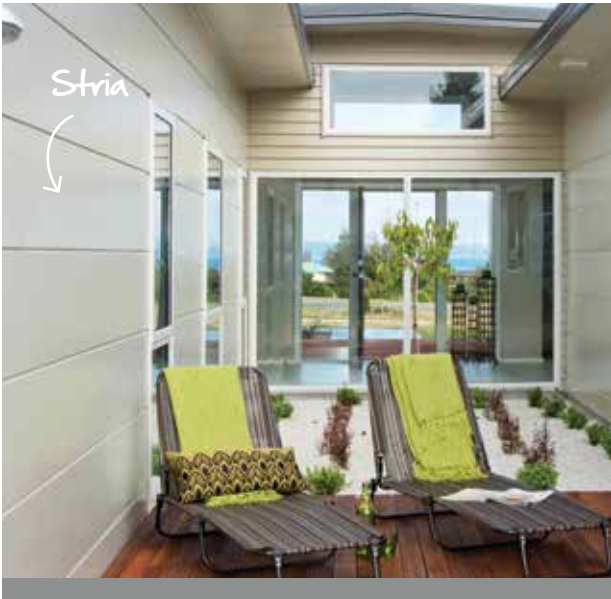


Find out more at [jameshardie.co.nz](http://jameshardie.co.nz)

Our cladding gives you the flexibility to create unique feature walls to liven up internal spaces. The strong horizontal lines of Linea Weatherboard and Stria Cladding give interior walls a strong, sturdy look, creating a uniquely distinctive space.

Titan Facade Panel's unique profile allows you to transform large empty spaces into beautiful architectural features. And the clean vertical lines provided by Axon Panel are perfect for creating a traditional and simple look.

Why not combine your cladding with our range of linings to create an even more personalised look? Read on to find out more about our lining range...





# Internal Linings

---



## Style and strength from wall to wall.

Your walls are the backdrop to your life, so why not make them a stunning feature in their own right. When you think about how many years they'll be standing, it makes sense to choose your colours and finishes carefully.

# HardieGroove™

LINING

## The traditional charm of tongue and groove.

HardieGroove Lining offers a traditional grooved look. This versatile product can be used as a subtle feature in place of tiles in bathrooms and laundries. Or add style and character to ceilings and walls in any room of your home.

The durability of HardieGroove Lining also makes it ideal for lining cupboards and wardrobes.

- **V-shaped grooves give that classic tongue and groove timber look**
- **Durable surface is resistant to bumps and knocks of everyday life**
- **Resistant to damage from moisture, rot and fire**
- **15 year product warranty**



Find out more at [jameshardie.co.nz](https://www.jameshardie.co.nz)



“The high impact resistance of HardieGroove Lining made it the smart choice for my high traffic areas, which are normally prone to damage.”

IVAN PACAK, HOMEOWNER



# HardieGlaze™

LINING

## A crisp, clean finish that stays that way.

HardieGlaze Lining creates an easy-clean ceramic look for bathroom walls, in showers, laundries and on kitchen splashbacks.

It's ideal for a minimalist, modern look and works beautifully with contemporary fittings.

- Available in smooth finish and three tile patterns
- Grout free for low maintenance
- Durable and resistant to damage from moisture, rot and fire
- Easy to clean
- 15 year product warranty



HardieGlaze  
Lining ↘



“HardieGlaze Lining has made a big impression on our bathroom design.”

**JACLYN BAKER, HOMEOWNER**

# Eclipsa™

EAVES LINING

## Simplify your project with stunning results.

Pre-painted in white, Eclipsa Eaves Lining comes with a range of colour-matched accessories and eliminates the need for on-site painting - saving you time.

It's perfect for lining verandas, porches, carports and any ceiling area where a prefinished, easy clean surface is needed.

- **Pre-painted to save you time and maintenance**
- **Durable and resistant to damage from moisture, rot and fire**
- **10 year product warranty**

# HardieGroove™

SOFFIT LINING

## Traditional character, modern durability.

HardieGroove Soffit Lining has the charm of traditional tongue and groove timber, with all the structural qualities of modern James Hardie products.

It's perfect for enhancing design lines on modern buildings or renovating old villas and bungalows.

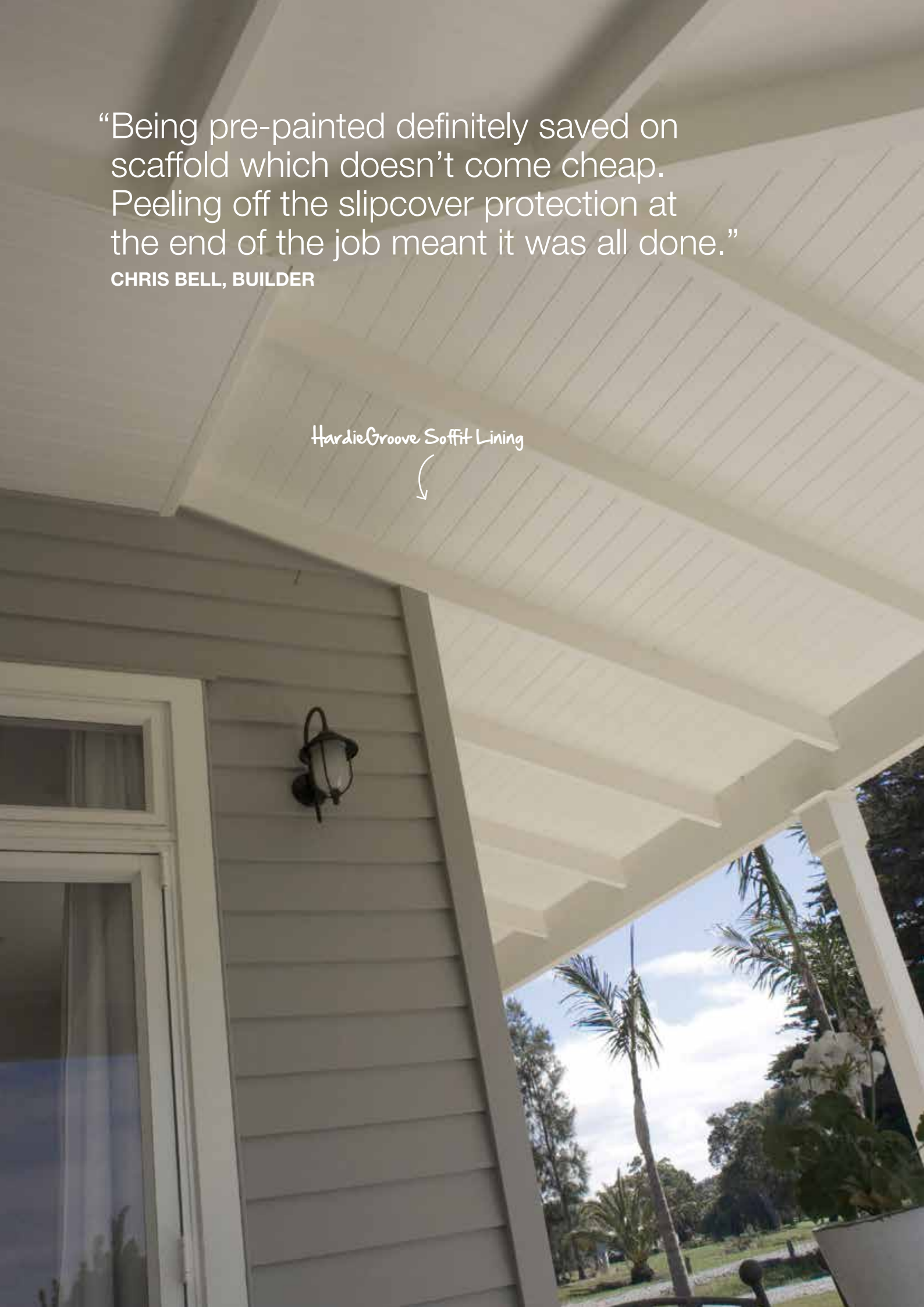
HardieGroove Soffit Lining also looks stunning in large sized eaves on verandas, porches and carports.

- **Great for new builds as well as enhancing existing buildings**
- **Durable and resistant to damage from moisture and rot**
- **15 year product warranty**

“Being pre-painted definitely saved on scaffold which doesn’t come cheap. Peeling off the slipcover protection at the end of the job meant it was all done.”

**CHRIS BELL, BUILDER**

HardieGroove Soffit Lining





All products must be installed and maintained correctly and to the extent set out in James Hardie published literature current at time of installation.  
© July 2016 James Hardie New Zealand. ™ and ® denotes a trademark or registered trademark owned by James Hardie Technology Limited.

**Ask James Hardie™ | Call 0800 808 868 | [jameshardie.co.nz](http://jameshardie.co.nz)**

