



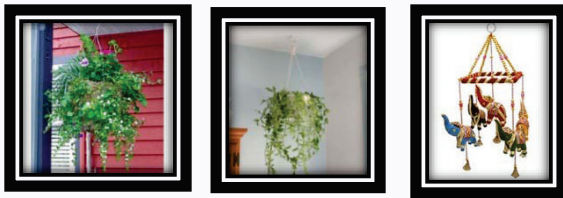
Product Description

The CeilingDriller™ is, by far, the most practical, easy to install and secure plant hook on the market. Strong and elegant, this hanger will swivel a whole 360 degrees for the ideal orientation of your plant or any decoration. No pre-drilling is required: only a screwdriver will activate a toggling mechanism (DrillerToggle™) that will toggle flat behind the drywall, locking securely the base of the hook to the ceiling.

Features & Benefits

- No pre-drilling / all you need is a screwdriver .
- Hook swivels 360 degrees for proper orientation.
- Heavy-duty hanger with toggling mechanism .
- 3 decorative finishes: white, brass or antique .
- The most secure plant hanger on the market

Perfect for:

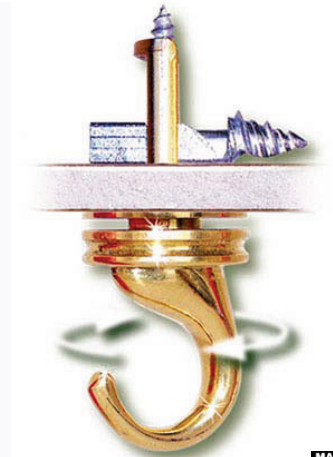


Suspended plants or light weight decorations

Packaging:



*Ceiling***Driller**™



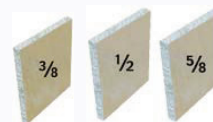
Product sizes & Materials

Material: Zinc

Colours: Brass , white & antique

Suitable Base Materials

- Drywall 3/8
- Drywall 1/2
- Drywall 5/8



Plant Hook



Ceiling **Driller™**



Load Capacities

	Material	PULL MAX lbs	PULLSAFE lbs	PULL MAX kg	PULLSAFE kg
3/8"	Drywall 3/8	45	23	20	10

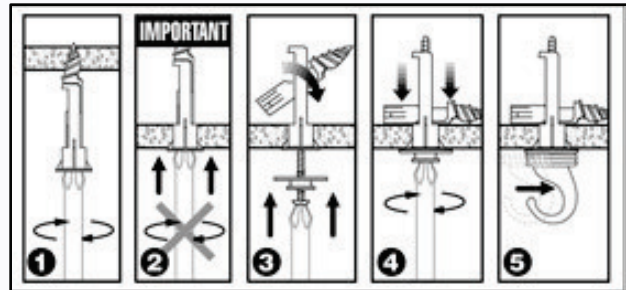
	Material	PULL MAX lbs	PULLSAFE lbs	PULL MAX kg	PULLSAFE kg
1/2"	Drywall 1/2	60	30	27	14

	Material	PULL MAX lbs	PULLSAFE lbs	PULL MAX kg	PULLSAFE kg
5/8"	Drywall 5/8	80	40	36	18

Tools required



Installation instructions



1. Using a screwdriver, pierce the ceiling with the tip of the DrillerToggle™, and screw clockwise.
2. Once the threaded portion is screwed into the ceiling, push the anchor through until it is flush to the ceiling.
3. Insert the screw through the metal round base.
4. Turn clockwise until there is a firm resistance.
5. Slide the hook into the metal round base.