



Create your space.

Available at
BUNNINGS
warehouse

flexi
STORAGE | WARDROBE





flexi STORAGE | WARDROBE

CONTENTS

Wardrobe Range Overview	3
Sliding Wardrobe Buying Process	4
Sliding Wardrobe Shopping Check List	6
Hinged Wardrobe Buying Process	8
Hinged Wardrobe Shopping Check List	10
Walk-In Wardrobe Overview	12
Walk-In Wardrobe Shopping Check List	13
Built-In Wardrobe Overview	14
Built-In Wardrobe Shopping Check List	15
Product Support	16
Tools Required	17
Features & Benefits	18
Product Safety	19

Please Note:

Not all products are available in every store. Please see the Special Orders desk for further advice.



YOUR DREAM WARDROBE MADE EASY

The Flexi Storage Wardrobe is an easy to build wardrobe system.

Imagine having a space which is organised just the way you like it. We have you covered, with our DIY wardrobe program which is simple to assemble and install.

Choose from a stand alone Sliding wardrobe, Walk-in and Built-in unit as well as a Hinged wardrobe. All are designed to fit your space. Plus you can select your own internal accessories to fit out and customise your wardrobe.

**TAKE A MOMENT TO READ
OUR BROCHURE, WE HAVE
YOU COVERED WITH SLIDING,
HINGED, WALK IN OR BUILT IN
WARDROBE OPTIONS.**



WARDROBE SELECTION PROCESS

When thinking about your wardrobe requirements, you will need to think about what you wish to store and your overall space. With our Flexi Storage Wardrobe range we have the perfect solution.

SLIDING WARDROBE

Perfect for easy access to tight spaces, sliding doors provide a fresh clean look - you can make awkward spaces usable and functional. Plus our sliding door wardrobe is easy to assemble and install.



HINGED WARDROBE

The Hinged system is ideal for rooms where space is not an issue, connect two or more units together for an even larger storage opportunity. You will be sure to find an eye catching option for your space.



WALK-IN WARDROBE

A Walk-In Wardrobe provides space to display your most loved pieces. Offering a variety of units and configurations, maximise your wardrobe space to store clothes, shoes, bags and accessories all in one easy-to-build system.



BUILT-IN WARDROBE

Built-In units are an ideal fit inside your existing wardrobe cavity or recess. Shelves can be added and adjusted to virtually any position you like and the inclusion of drawers creates extra functional storage.





SLIDING WARDROBE

3 STEP BUYING PROCESS

BUYING MADE EASY... IN 3 EASY STEPS YOU CAN DESIGN YOUR NEW WARDROBE AND DECLUTTER YOUR SPACE.

When in store follow the 3 step packaging to select the right wardrobe components to build your dream wardrobe.

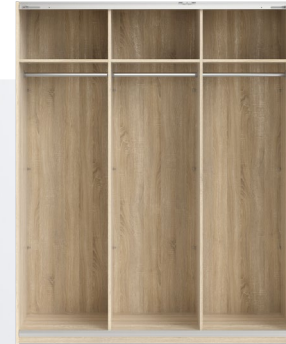
Also view our how to videos to guide you through the process of bringing your wardrobe to life! The Flexi Storage Wardrobe is an easy to build modular based wardrobe system.

Imagine having a space which is organised just the way you like it. We have you covered, with our DIY wardrobe system which is simple to assemble and install. Plus you can select your own internal accessories to fit out and customise your storage space.

VERTICAL BUILD



Builds in its final resting place - no need to relocate or carry upstairs.



STEP 1

CHOOSE YOUR FRAME

Measure the available space for your wardrobe. Then select your frame.

Choose from
1200 or 1800mm widths.
White or oak finish.

* All door fittings & Sliding Rail Track included in Frame Kit.



OUR WARDROBE SYSTEM ALLOWS YOU TO PLAN, DESIGN, ORDER AND BUILD YOUR OWN WARDROBE - IT'S SIMPLE AND SAVES YOU DOLLARS.



STEP 2

ADD DOORS

Next select the finish of your door. You can select from white, oak, high gloss white and a mirror finish.



STEP 3

ADD ACCESSORIES

Fit out your wardrobe with shelving. Timber shelves are sold in packs of 2. They are available in a white or oak finish.

Timber Drawer Inserts with soft closing hinges are sold individually and are available in a white or oak finish.

Soft Closing Devices for all sliding doors can be fitted discreetly for a smooth, soft and silent door close.



SLIDING WARDROBE

SHOPPING CHECK LIST



**SLIDING WARDROBE
2 DOOR FRAME WHITE**

2189H x 1194W x 604D
FINELINE: 02583929 [01668]
BARCODE: 9341136016680

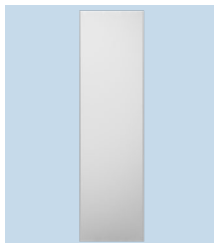
QUANTITY:



**SLIDING WARDROBE
3 DOOR FRAME WHITE**

2189H x 1782W x 575D
FINELINE: 02583930 [01669]
BARCODE: 9341136016697

QUANTITY:



**SLIDING WARDROBE
DOOR WHITE**

2154H x 598W x 15D
FINELINE: 02583916 [01670]
BARCODE: 9341136016703

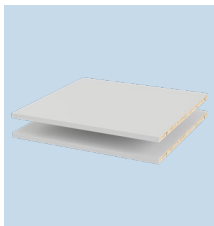
QUANTITY:



**SLIDING WARDROBE
DOOR OAK**

2154H x 598W x 15D
FINELINE: 02583917 [01671]
BARCODE: 9341136016710

QUANTITY:



**SLIDING WARDROBE
2 SHELVES
WHITE**

18H x 570W x 538D
FINELINE: 02583920 [01674]
BARCODE: 9341136016741

QUANTITY:



**SLIDING WARDROBE
2 SHELVES
OAK**

18H x 570W x 538D
FINELINE: 02583926 [01681]
BARCODE: 9341136016819

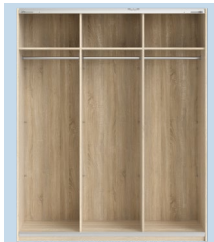
QUANTITY:



**SLIDING WARDROBE
2 DOOR FRAME OAK**

2189H x 1194W x 604D
FINELINE: 02583932 [01679]
BARCODE: 9341136016796

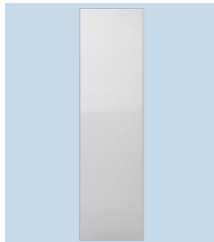
QUANTITY:



**SLIDING WARDROBE
3 DOOR FRAME OAK**

2189H x 1782W x 575D
FINELINE: 02583933 [01680]
BARCODE: 9341136016802

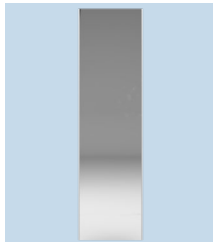
QUANTITY:



**SLIDING WARDROBE
DOOR HIGH GLOSS WHITE**

2154H x 598W x 15D
FINELINE: 02583918 [01672]
BARCODE: 9341136016727

QUANTITY:



**SLIDING WARDROBE
DOOR MIRROR**

2154H x 598W x 18D
FINELINE: 0095326 [02531]
BARCODE: 9341136025316

QUANTITY:



**SLIDING WARDROBE
SOFT CLOSING 3 DRAWER
INSERT LARGE WHITE**

752H x 570W x 530D
FINELINE: 02583922 [01676]
BARCODE: 9341136016765

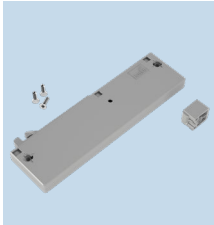
QUANTITY:



**SLIDING WARDROBE
SOFT CLOSING 3 DRAWER
INSERT LARGE OAK**

752H x 570W x 530D
FINELINE: 02583928 [01683]
BARCODE: 9341136016833

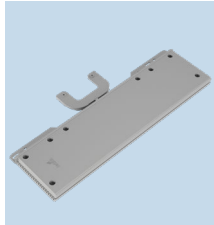
QUANTITY:



**SLIDING WARDROBE
SOFT CLOSING DEVICE
LEFT & RIGHT**

57H x 175W x 13D
FINELINE: 02583942 (01677)
BARCODE: 9341136016772

QUANTITY:



**SLIDING WARDROBE
SOFT CLOSING DEVICE
CENTRE**

35H x 156W x 16D
FINELINE: 02583925 (01678)
BARCODE: 9341136016789

QUANTITY:



**SLIDING WARDROBE
HANGING RAIL**

LENGTH: 565
FINELINE: 00064798 (01691)
BARCODE: 9341136016918

QUANTITY:



SLIDING WARDROBE 3 DOOR FRAME WHITE
FINELINE: 02583930 (01669) WITH **SLIDING WARDROBE
DOORS WHITE** FINELINE: 02583916 (01670) & **SLIDING
WARDROBE DOOR MIRROR** FINELINE: 0095326 (02531)





HINGED WARDROBE

2 STEP BUYING PROCESS

- **IN 2 EASY STEPS YOU CAN DESIGN AND INSTALL YOUR WARDROBE**
- **IDEAL FOR LARGER ROOMS**
- **GREATER ACCESS TO CLOTHES AND OTHER ITEMS STORED**

Hinged doors are ideal for larger rooms, as they allow maximum access to your wardrobe. Our hinged doors are available in a range of colours and finishes.

All hinged doors come with an aluminum handle. You can select your own internal accessories to fit out and customise your storage space.

VERTICAL BUILD



Builds in its final resting place - no need to relocate or carry upstairs.



STEP 1

CHOOSE YOUR FRAME

Measure the available space for your wardrobe. Then select your frame.

Choose from
1200 or 1800mm widths.
White finish.

* All door fittings & Hinges included in Frame Kit.

OUR RANGE OF HINGED WARDROBES
COME IN A VARIETY OF STYLES, FINISHES AND COLOURS.



STEP
2

ADD DOORS

Next select the finish of your door. You can select from white, oak, high gloss white, classic and a mirror finish.



**HINGED WARDROBE
DOOR CLASSIC, WHITE**
FINELINE: 00064801 (01856)



HINGED WARDROBE

SHOPPING CHECK LIST

Quick To Assemble

DIY



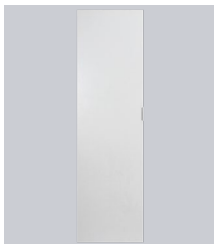
HINGED WARDROBE
2 DOOR FRAME WHITE
2189H x 1194W x 575D
FINELINE: 00064799 [01854]
BARCODE: 9341136018547

QUANTITY:



HINGED WARDROBE
3 DOOR FRAME WHITE
2189H x 1782W x 575D
FINELINE: 00064800 [01855]
BARCODE: 9341136018554

QUANTITY:



HINGED WARDROBE
DOOR WHITE
2124H x 596W x 15D
FINELINE: 00064805 [01861]
BARCODE: 9341136018615

QUANTITY:



HINGED WARDROBE
DOOR OAK
2124H x 596W x 15D
FINELINE: 00064802 [01857]
BARCODE: 9341136018578

QUANTITY:

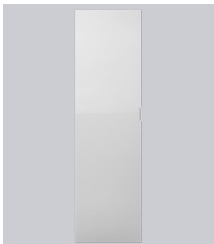


HINGED WARDROBE
HANGING RAIL
LENGTH: 565
FINELINE: 00064798 [01691]
BARCODE: 9341136016918

QUANTITY:

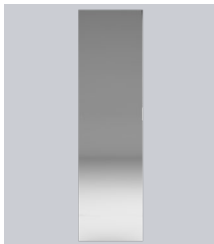
flexi TIP

You may wish to purchase soft close hardware for your Flexi Storage wardrobe doors to enable self closing and eliminate slamming. They take minutes to install.



HINGED WARDROBE
DOOR HIGH GLOSS WHITE
2124H x 596W x 15D
FINELINE: 00064803 [01858]
BARCODE: 9341136018585

QUANTITY:



HINGED WARDROBE
DOOR MIRROR
2124H x 596W x 15D
FINELINE: 00064804 [01859]
BARCODE: 9341136018592

QUANTITY:



HINGED WARDROBE
DOOR CLASSIC
2124H x 596W x 15D
FINELINE: 00064801 [01856]
BARCODE: 9341136018561

QUANTITY:



HINGED WARDROBE
DOORS WHITE X3
FINELINE: 00064805 [01861]
3 DOOR FRAME WHITE
FINELINE: 00064800 [01855]



**HINGED WARDROBE 2 DOOR
FRAME WHITE (X2) FINELINE:
00064799 (01854) WITH HINGED
WARDROBE DOORS OAK (X4)
FINELINE: 00064802 (01857)**



WALK-IN WARDROBE

- **CREATE A COORDINATED LOOK FOR ALL YOUR STORAGE ITEMS ON SHOW**
- **MANY DIFFERENT OPTIONS – MELAMINE SHELVES, DRAWER UNITS AND HANG RAILS**

Walk-In units allow you to maximise your area to store clothing, shoes and accessories in various layouts, making them easy to access and view.

Choose from a variety of drawer, hang or shelving configurations to create the ideal walk-in wardrobe storage solution.

**flexi
TIP**

Try to keep some consistency of lines throughout your wardrobe space. This ensures the space is visually pleasing – the repetition of drawer fronts and shelving is a good example of how to achieve this.





WALK-IN WARDROBE

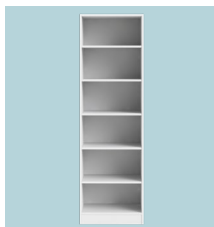
SHOPPING CHECK LIST



WALK IN WARDROBE
1 HANG RAIL 2 SHELF
UNIT WHITE

2000H x 606W x 480D
FINELINE: 02583987 [01685]
BARCODE: 9341136016857

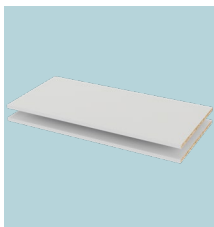
QUANTITY:



WALK IN WARDROBE
6 SHELF UNIT
WHITE

2000H x 606W x 480D
FINELINE: 02583988 [01686]
BARCODE: 9341136016864

QUANTITY:



WALK IN WARDROBE
2 SHELVES
WHITE

18H x 570W x 457D
FINELINE: 02583990 [01688]
BARCODE: 9341136016888

QUANTITY:



WALK IN WARDROBE
GLASS FRONT DRAWER
ACCESSORY WHITE

195H x 450W x 567D
FINELINE: 00064797 [01693]
BARCODE: 9341136016932

QUANTITY:



WALK IN WARDROBE
HANGING RAIL

LENGTH: 565
FINELINE: 00064798 [01691]
BARCODE: 9341136016918

QUANTITY:



WALK IN WARDROBE
4 DRAWER 3 SHELF
UNIT WHITE

2000H x 606W x 480D
FINELINE: 02583986 [01684]
BARCODE: 9341136016840

QUANTITY:



WALK IN WARDROBE
6 SHELF CORNER
UNIT WHITE

2000H x 970/970W x 480D
FINELINE: 02583989 [01687]
BARCODE: 9341136016871

QUANTITY:



WALK IN WARDROBE
MESH SHOE RACK
ACCESSORY WHITE

60H x 560W x 588D
FINELINE: 00039740 [01860]
BARCODE: 9341136018608

QUANTITY:



WALK IN WARDROBE
MESH BASKET
ACCESSORY WHITE

190H x 560W x 460D
FINELINE: 00039739 [01730]
BARCODE: 9341136017304

QUANTITY:



MAXIMISE YOUR SPACE WITH A
**WALK IN WARDROBE 6 SHELF
CORNER UNIT** WHITE FINELINE:
02583989 [01687]



BUILT-IN WARDROBE

- **UNITS CAN BE EASILY ASSEMBLED AND FITTED INTO YOUR WARDROBE CAVITY**
- **THE UNITS CAN BE STAND-ALONE STORAGE SOLUTIONS**

Built-In units are ideal for fitting inside your Built-In wardrobe to create functional shelving and drawer storage space.

Our shelves can be adjusted to virtually any position you like. The inclusion of drawers enables you to create a custom wardrobe that works for you at an affordable price.

flexi
TIP

Try to maximise all the space you have by adding storage up to the ceiling. Use higher shelving and pigeon holes to store off-season clothing, travelling items or spare linen.

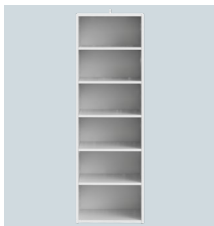
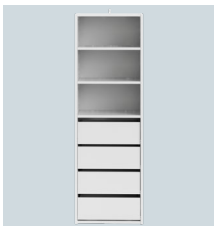


FUNCTIONAL STORAGE WITH **BUILT IN WARDROBE 4 DRAWER 3 SHELF UNIT WHITE** FINELINE: 02583991 (01689) AND **BUILT IN WARDROBE 6 SHELF UNIT WHITE** FINELINE: 02583992 (01690)



BUILT-IN WARDROBE

SHOPPING CHECK LIST



Quick To Assemble

DIY

MODULAR & ADAPTABLE

6 YEAR WARRANTY

BUILT IN WARDROBE

4 DRAWER 3 SHELF

UNIT WHITE

1588H x 506W x 400D

FINELINE: 02583991 (01689)

BARCODE: 9341136016895

QUANTITY:

BUILT IN WARDROBE

6 SHELF

UNIT WHITE

1588H x 506W x 400D

FINELINE: 02583992 (01690)

BARCODE: 9341136016901

QUANTITY:



WE WANT TO MAKE SURE THAT EVERY CUSTOMER CAN DESIGN & INSTALL THEIR OWN WARDROBE, SO WE SET OUT TO MAKE THE WHOLE DIY PROCESS AS EASY AS POSSIBLE.

To help you through the installation process, we offer a wardrobe assembly library to guide you through the process of bringing your dream wardrobe to life!

We have easy to understand How To Videos that will step you through the assembly and installation. Please see our Support section on our website for further information and assistance.

flexi
TIP

Dresses and long coats need a long hanging space, while shirts, skirts and trousers need shorter hanging space. A good starting point is to allow a height of 940mm for short hanging space and 1880mm for long. The proportion of how much 'long' vs 'short' space needed will vary, but a minimum of a quarter of all hanging space devoted to long clothing is a good start.





TOOLS REQUIRED

**OUR TOOLS AND HARDWARE CHECK LIST
SHOW YOU WHAT TOOLS YOU'LL NEED FOR
EACH STAGE OF THE ASSEMBLY PROCESS.**



• **Small spirit level** (will allow you to determine if your floor is not level)



• **Tape Measure** (only required for measuring your available space)



• **Phillips Head Screw Drivers**



• **Rubber Mallet** (to ensure you do not dent your wardrobe panels)



**SCAN FOR ONLINE
INSTRUCTIONAL VIDEO**



FEATURES & BENEFITS

VERTICAL BUILD



Unlike other wardrobe systems on the market requiring several people to assemble and lift into position, the unique and highly innovative Vertical Build System has lots of advantages.

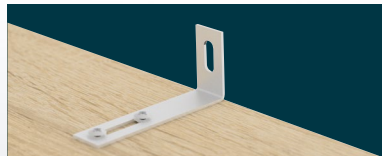
Benefits

- No heavy lifting once assembled.
- Simple to assemble.
- Allows you to assemble your Sliding or Hinged wardrobe in your chosen location and in an upright position - no need to relocate or reposition.
- Utilises all available space; able to build around corners as well as fit against walls with ease.
- Vertical Build applicable to the Sliding and Hinged Wardrobe Frames only.

SAFE CONNECTION



SAFE CONNECTION improves safety, as the L bracket enables you to secure the wardrobe to the wall, preventing it from tipping over and injuring children and others. SAFE CONNECTION also stabilises the wardrobe, thus extending the life of the wardrobe.



Built-In and Walk-In units can be connected together.

MODULAR & ADAPTABLE



The Flexi Storage Sliding, Walk-In, Hinged and Built-In Wardrobe range is designed to be modular and adaptable. You choose it all; the size, colour and style.

Select from a range of doors and accessories to suit your home, lifestyle, budget and needs, and know that as these change, components can be re-arranged, taken down, added to or moved.

BUILD IT SAFE

ALWAYS ENSURE YOU ANCHOR YOUR WARDROBE TO THE WALL. IT IS THE BEST WAY TO PREVENT TIP-OVER AND INJURY TO CHILDREN OR OTHERS. THE WALL FIXING ATTACHMENT IS AN INTEGRAL PART OF THE ASSEMBLY INSTRUCTIONS AND MUST BE INSTALLED.

- Avoid putting heavy and/or unstable items high on the wardrobe (that could be pulled off a high shelf)
- Keep any power cords behind the wardrobe
- Always discourage children from climbing up any furniture



THIS PRODUCT SHOULD BE PERMANENTLY ANCHORED TO THE WALL OR OTHER SUITABLE SURFACE TO AVOID SERIOUS INJURY OR DEATH.

THIS PRODUCT SHOULD BE PERMANENTLY ANCHORED TO THE WALL OR OTHER SUITABLE SURFACE TO AVOID SERIOUS INJURY OR DEATH. TO HELP AVOID ANY SERIOUS INJURY OR DEATH, THIS PRODUCT INCLUDES A FIXING BRACKET TO PREVENT TOPPLING. WE STRONGLY RECOMMEND THAT THIS PRODUCT BE PERMANENTLY FIXED TO THE WALL OR OTHER SUITABLE SURFACE. FIXING HARDWARE IS NOT INCLUDED SINCE DIFFERENT SURFACE MATERIALS REQUIRE DIFFERENT ATTACHMENTS. PLEASE SEEK PROFESSIONAL ADVICE IF YOU ARE IN DOUBT WHAT FIXING HARDWARE TO USE. REGULARLY CHECK YOUR FIXING DEVICE.



flexiTM
STORAGE | WARDROBE

Create your space.



SCAN FOR ONLINE
INSTRUCTIONAL
VIDEO

AUS: flexistorage.com.au

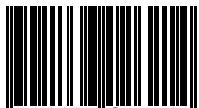
NZ: flexistorage.co.nz

DISTRIBUTED BY:

ZENEXUS (AUS) PH: 1300 734 714

ZENEXUS (NZ) PH: 0800 443 058

ITEM NO: 02621



9 341136 026214

Available at
BUNNINGS
warehouse

MAY 2019

