



PUREPINE
MOULDINGS

For the classic look
and feel of traditional
painted fences,
choose Primewood.



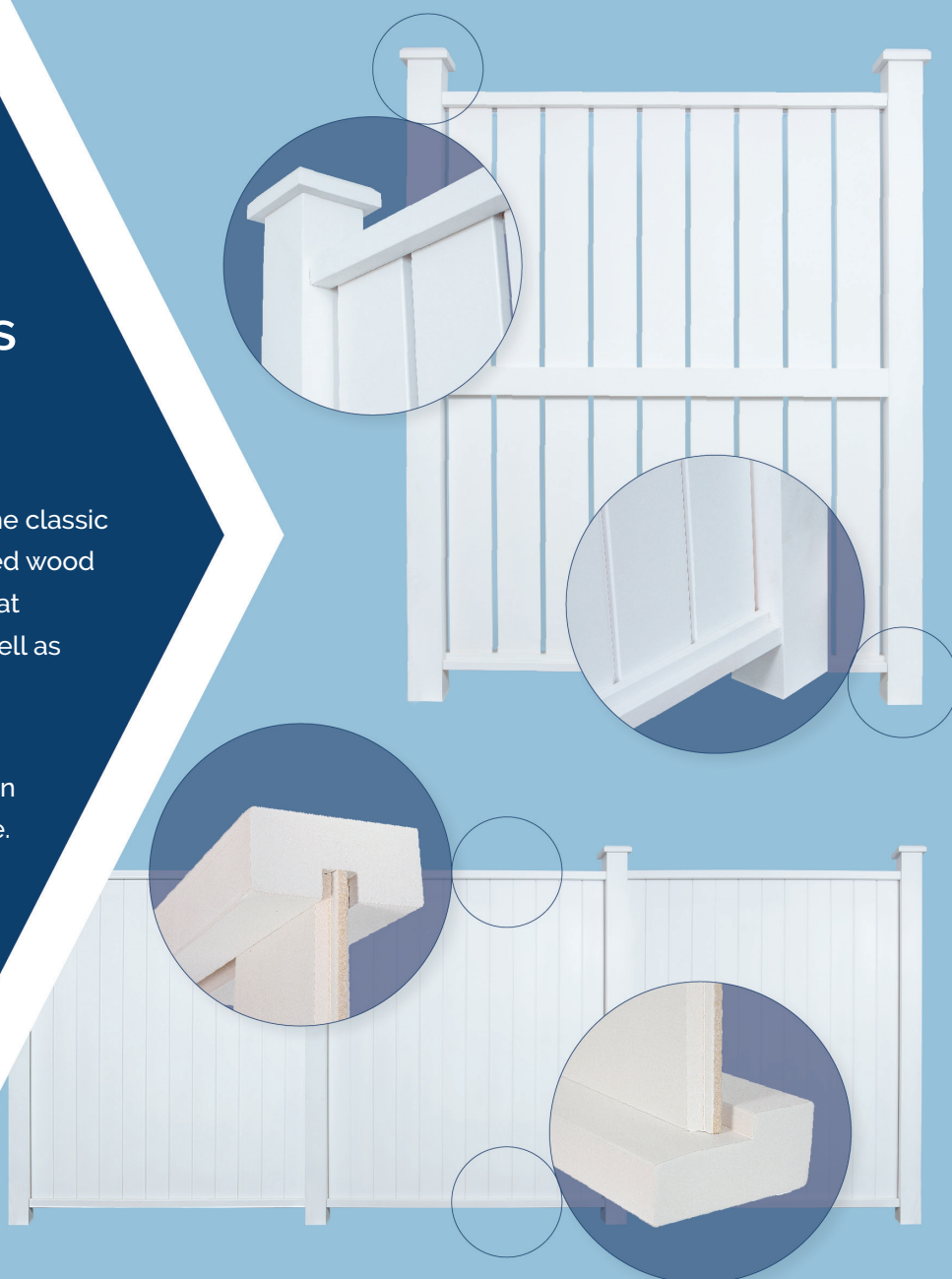
purepine.co.nz

Primewood fencing helps turn your outdoor dreams into reality.

Many homeowners appreciate the classic look and feel of traditional painted wood fence. Primewood fences add that traditional touch to a home, as well as providing privacy and security.

A solid privacy fence using the Shiplap or TGV profiles will add an extra touch of solitude to a home. This type of fence can also protect against harsh winds and distracting street noise.

Our Dressed profile palings ensure that a yard is safe for children and pets to enjoy while providing an open feel to any yard.

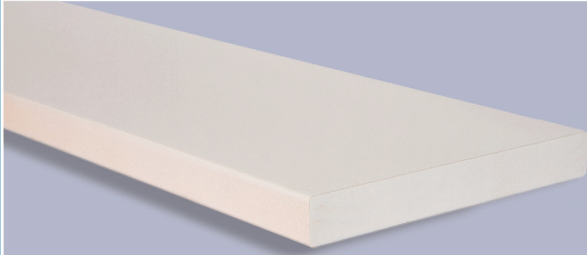


Primewood machine finished palings represent a quality fencing option, they still have a classic, traditional appearance but they have a contemporary, smoother finish. The Primewood fencing range offer durability by combining a robust specification with quality materials that are supplied treated and primed ready for installation.

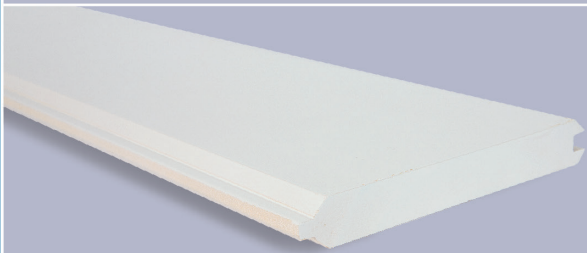


PUREPINE PRIMEWOOD FENCING — ALL COMPONENTS TREATED AND PRIMED

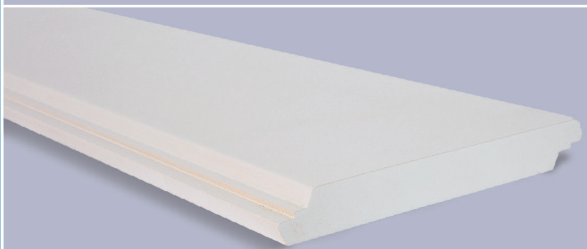
PALINGS



Primewood
Square Dressed Paling H3.1
1.8m x 140 x 18



Primewood
Tongue and Groove Paling H3.1
1.8m x 140 x 18



Primewood
Shiplap Paling H3.1
1.8m x 140 x 18

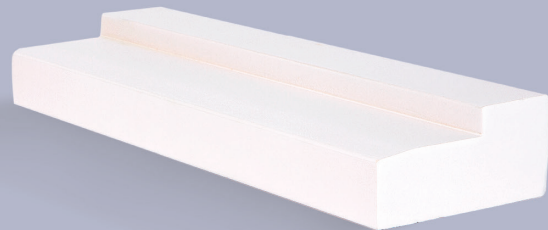
RAILS



Primewood Top Rail H3.1
5.4m x 90 x 42



Primewood Middle Rail H3.1
5.4m x 90 x 42



Primewood Bottom Rail H3.1
5.4m x 90 x 42

POSTS



Primewood H5
Laminated Post
2.4m x 88 x 88*



Primewood H5
Laminated Post
2.4m x 112 x 112*

* Also available in 3.6m length

Installation and Painting recommendations

All components are manufactured from H3.1 treated finger-jointed radiata pine and have been factory primed with an alkyd (oil based) primer.

Post selection is at the discretion of the owner however we recommend laminated 88 x 88 or 112 x 112 H5 posts to complete the premium look of your fence.

Once the fence has been installed we recommend the paint finishing be completed with a minimum of two premium exterior top coats at an LRV of 45 or higher.

Disposal

Preserved wood may be disposed of in landfills, or burned in commercial or industrial incinerators or boilers, in accordance with local council rules and regulations.

Guidelines to assist with maximising the lifespan of your Primewood fence.

- 1 Bottom rail needs to be installed with suitable ground clearance to ensure surface water and soil is not in contact with rail.
- 2 If possible we recommend painting the bottom rail with a top coat before installing as proximity to the ground can make this difficult once in place.
- 3 Prime all cut ends and any exposed timber with a premium timber alkyd primer prior to installation.
- 4 Before painting clean down to remove any dirt and surface contaminants. All nail or screw holes should be filled with suitable wood filler.
- 5 All initial coating and subsequent maintenance is to be done in accordance with the paint manufacturers instructions.

Available from your local Timber Merchant

purepine.co.nz

