

EUROMATIC



15cm Rechargeable Table Fan with Night-Light

INSTRUCTION MANUAL

Model Number TNLF6

AFTER SALES SUPPORT
(AU) 1300 886 649 (NZ) 0800 836 761



Contents

	Page
Important Safety Instructions	3
Product Overview	6
Getting Started	7
Instructions	8
Other Useful Information	9

Important Safety Instructions

READ CAREFULLY AND KEEP FOR FUTURE REFERENCE

Read this manual thoroughly before first use, even if you are familiar with this type of product. The safety precautions enclosed herein reduce the risk of fire, electric shock and injury when correctly adhered to. Make sure you understand all instructions and warnings. Keep the manual in a safe place for future reference, along with any warranty information, your purchase receipt and the original packaging. **Always follow basic safety precautions and accident prevention measures when using an electrical appliance, including the following:**

Power supply

- **Voltage:** The appliance must only be supplied at a safe low voltage (DC5V/1A) from a power source via the supplied USB cable. Before connecting the appliance to your power source for charging, ensure that the voltage indicated on the rating label matches the voltage of your power source.
- **Water and moisture:** Do not submerge the appliance in water or other liquid. Make sure water does not reach the external parts of the appliance. Do not use it where it can fall into water. Do not touch the power supply (USB) cable with wet hands.
- **Protect the USB cable:**
 - Do not use the appliance with the cable coiled up; always fully unwind.
 - Do not twist the cable or let it touch heated surfaces or sharp edges.
 - Do not allow the cable to hang over the edge of a table, desk or bench.
 - Never pull or carry the fan by the USB cable.
- **Damage:** Check the USB cable regularly for visible damage. If the cable is damaged, do not use it to power the fan. Do not use the fan if it is damaged. In case of damage, contact our after sales support centre for advice. Do not attempt to open the motor housing or repair the appliance yourself.
- **WARNING!** Do not pick up or operate the appliance if the USB cable, USB port or housing is damaged, after it malfunctions, or has been dropped or damaged in any manner. In case of damage, contact your local store or our after sales support centre for advice.
- **Guard removal:** Ensure the fan is disconnected from the power supply before removing a front or rear guard (grille).
- **Free airflow:** Ensure nothing is blocking the air outlet and intake. Do not insert objects into any opening.
- **Switch off:** Switch off the fan and disconnect it from the power source when it is not in use and before cleaning, maintenance, storage or moving it.
- **Disconnection:** Turn off the unit first and then disconnect the USB cable from the power source. Grip the USB connector and remove it from the USB port, do not pull the cable.

Important Safety Instructions (Cont.)

Usage conditions and restrictions

- **Domestic use only:** This appliance is intended for private domestic use only. It is not suitable for commercial or industrial use.
- **Intended purpose:** Do not use the appliance for any other purpose and only use it as described in this manual. Any other use is not recommended and may cause fire, electric shock or injury.
- **Usage restriction:** The appliance is not intended for use by persons (including children) with reduced physical, sensory or mental capabilities, or lack of experience and knowledge, unless they have been given supervision or instruction concerning use of the appliance by a person responsible for their safety.
- **Children:** Supervise children to ensure they do not play with the appliance. Close supervision is necessary when any appliance is used by or near children.
- **WARNING! Do not leave unattended during use!** Always switch the fan off and disconnect it from the power source when it is not in use, if left unattended, and before cleaning and storing.
- **Usage position:** Place the fan on a dry, flat, stable surface to avoid overturning. Alternatively, install it wall-mounted to a suitable wall.
- **Keep clear, do not cover:** Do not cover the appliance or obstruct the front or rear air inlet or outlet grilles. Do not place anything on top of fan.
- **WARNING! DO NOT use the appliance in the following areas:**
 - in or near an open window where rain may enter the product
 - on a soft surface (such as carpet) or where it may tip over during use
 - in the immediate vicinity of water, such as in a bathroom, laundry, near a swimming pool, etc., where it could be splashed with or immersed in water
 - near an open flame, heater, hot burner, oven or other source of high heat, near electrical equipment or in direct sunlight
 - near curtains, plants, window furnishings or where objects can become caught in the blades
 - in areas where paint, petrol, etc. is stored and there is a risk of explosion or fire from flammable gases, or in areas where substances are being sprayed.
- **Attachments:** The use of accessory attachments not recommended in this manual may cause injury or hazards.
- **CAUTION! Personal safety:** Avoid contact with moving parts. Never insert fingers, pencils or any other objects through the grilles/housing when the fan is running. Keep hair and loose clothing well away from the fan when it is in use.
- **Disposal:** Do not dispose of the product in a fire to avoid an explosion hazard.
- **Misuse:** We accept no liability for any damages or personal injury caused by misuse of the product and/or failure to follow these instructions.

Important Safety Instructions (Cont.)

Rechargeable battery precautions

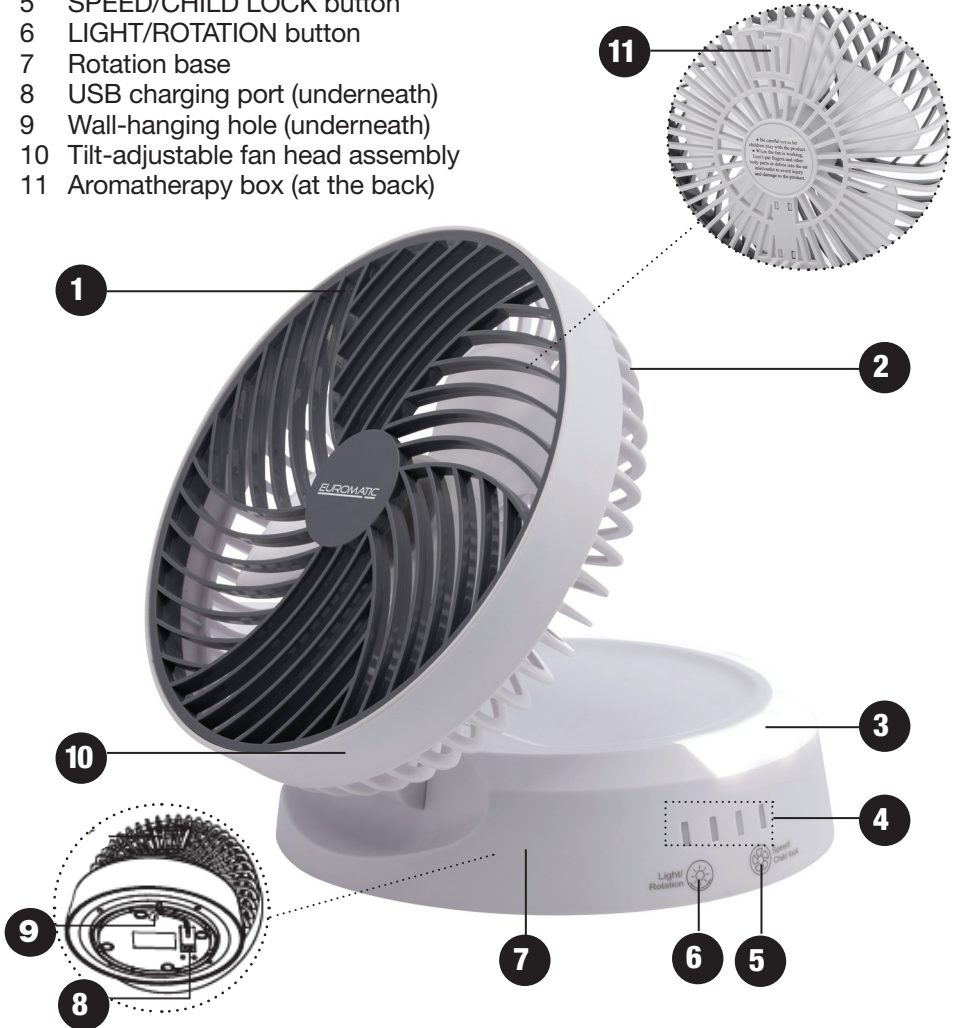
- This product contains a rechargeable lithium ion battery. Do not at any time leave the product charging unsupervised.
- Do not leave the unit connected to the power source while not in use.
- Before prolonged storage, apply charge to bring the battery to about half charge. Prolonged storage of an empty battery may damage the battery.
- Ensure to only use the supplied USB cable for charging and powering the unit. Using the wrong adaptor can cause fire or explosion of the battery.
- Do not use or charge the product if you notice anything wrong with the battery.
- Never dispose of a product containing a battery in a fire. At the end of its service life, dispose of it responsibly in accordance with any battery disposal regulations in your state.

Product Overview

Parts list

- 1 Front safety guard/grille (removable)
- 2 Rear safety guard/grille
- 3 LED light
- 4 Indicator lights
- 5 SPEED/CHILD LOCK button
- 6 LIGHT/ROTATION button
- 7 Rotation base
- 8 USB charging port (underneath)
- 9 Wall-hanging hole (underneath)
- 10 Tilt-adjustable fan head assembly
- 11 Aromatherapy box (at the back)

Also supplied, but not pictured:
USB cable (for charging)
Instruction manual
Warranty certificate



NOTE: Due to continued product improvement, images and illustrations in this manual may vary slightly from the product purchased. All images in this manual are for reference purposes only. Parts are not necessarily pictured to scale.

Getting Started

Before first use

- **Unpacking:** This product has been packaged to protect it against transportation damage. Unpack the appliance and keep the original packaging carton and materials in a safe place. It will help prevent any damage if the product needs to be transported in the future, and you can use it to store the appliance when it is not in use. In the event that the packaging is to be disposed of, please recycle it where possible.
- **Safe packaging disposal:** Plastic wrapping can be a suffocation hazard for babies and young children, so ensure all packaging materials are out of their reach and disposed of safely.
- **USB cable:** Inspect the USB cable and the appliance for visual damage. Do not use the appliance if anything appears to be damaged or not working properly. In case of damage, contact our after sales support centre.
- **Documentation:** Make sure you have read and understood all instructions and warnings in this manual. Refer to the illustrations to familiarise yourself with the product and identify all parts. Pay particular attention to the safety instructions on the previous pages.

Introduction

This rechargeable USB table fan with night-light provides a cooling breeze on hot summer days and a soft night-light at night. It is equipped with a built-in rechargeable battery so it can be used cordless away from the mains electricity supply.

With its 2-in-1 design, the appliance is perfectly suited for use at home, in the office or when you are outdoors camping or travelling. It comes with a USB cable for convenient charging from your computer, laptop, power bank or other suitable DC5V power source.

The fan operates with three speeds and can be tilted or wall-mounted as convenient (Fig. 1).

Fig. 1



Instructions


Charging

- Plug the supplied USB cable into the USB port underneath the appliance and connect it to your power source (computer USB port, power bank with an output power of DC 5V/1A) for charging.
- The red indicator light flashes during charging. It will turn off automatically when fully charged.
- When the red indicator light starts flashing during use, the appliance needs to be recharged.


Setting up

- To use the fan, place it on a dry, level surface where it will not overturn during use. Adjust the fan head manually to the desired angle.


First use: unlocking the child lock

- Before using the fan for the first time, you need to unlock the child lock: press and hold the CHILD LOCK  button for 2 seconds to unlock.
- The fan may pause operation for a few seconds to reset during first use or when the fan base is rotated by hand. It will resume operation automatically.


Speed selection

- Lightly press the SPEED  button to run the fan runs at low speed. Press the button a second time to increase the fan speed to medium. Press the button a third time to run the fan at high speed. Press the button a fourth time to switch the fan off. The corresponding indicator light will be on.

Oscillation

- Press and hold the ROTATION  button for 2 seconds to turn on or off the rotation function of the fan. The fan will oscillate from left to right and the corresponding indicator light will be on.

Night-light

- Lightly press the LIGHT  button to switch on the night-light (high brightness). Press the button a second time to keep the light on (low brightness). Press the button a third time and the light will start flashing. Press the button a fourth time to switch off the night-light.

Other Useful Information

WARNING!

- Before cleaning, maintaining or moving the product, and before removing the front guard, ensure the fan has stopped moving and is switched off and disconnected from the power source to prevent possible injury.
- Do not immerse the fan in water or other liquids; do not attempt to clean it under the tap. Do not spray it with liquids. Do not allow water to drip on or into the fan motor housing.
- Never use petrol, solvents, harsh detergents, vinegar, wire brushes or abrasive or alkaline cleaners on the fan.

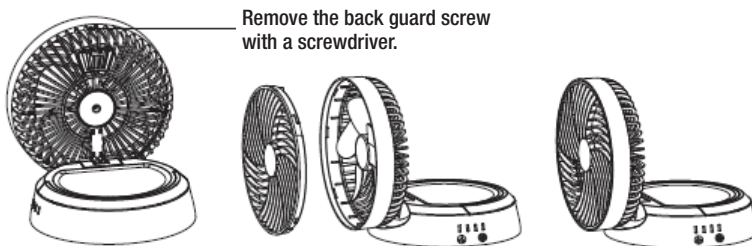
Regular cleaning and maintenance

- **Dusting:** Clean your fan regularly by lightly running a vacuum cleaner nozzle (soft brush) over the front and rear guards to remove any dust or dirt that may have accumulated inside or on the unit. Alternatively, use a soft, dry cloth for dusting.
- **Stubborn stains:** Use a slightly damp, soapy cloth for stubborn stains but be sure the cloth is not too wet. Use caution around the motor housing. Do not allow the motor or other electrical components to be exposed to water.
- Ensure the product is completely dry before charging and reuse.

Thorough cleaning: front guard disassembly

- When you have finished using the fan at the end of the season, wipe off any dust to maintain it in good working order for the next season.
- To clean the blades, carefully remove the front guard. First, ensure the unit is disconnected from the power supply.

Fig. 2



Other Useful Information (Cont.)

- Remove the back guard screw with a screwdriver, you can then disassemble the front guard by anticlockwise rotation along the edge of the front guard (Fig. 2).
- Carefully wipe the blades clean using a dry or slightly damp cloth and a little mild detergent, then wipe dry. Ensure all parts are thoroughly dry before reassembly.
- Reassemble the front guard by clockwise rotation to the hole, then secure the fan head with the screw, using a screwdriver to tighten it.

Storage

- Store the clean and dry fan in a safe, dry location, protected from dust.
- We recommend using the original carton for storage of the product. Alternatively, place a plastic bag or piece of material over the top of the cleaned fan for dust protection.

Service and repair

- The appliance requires no maintenance and contains no user-serviceable parts. Do not attempt to take the motor housing apart. Do not try to repair or modify the appliance.
- Do not operate the fan if its power cord or plug is damaged, or when it is working abnormally. In case of damage or malfunction, or if the cord is damaged, have the unit repaired by trained personnel only, or contact the after sales support line for advice on repair or replacement.
- Before phoning for a service, please ensure that your fan is fully charged.

Other Useful Information (Cont.)

Technical specifications

Power input	5V --- 1A
Rated power	5W
Battery capacity	Built-in OBY 18650 Li-ion battery, 4000mAh
Rechargeable:	via USB cable (included)
Charging time	6 hours (approx.)
Working time	2–16 hours (approx., depending on the speed setting)
Fan speeds	3 (Low - Medium - High)
Dimensions (mm)	190 x 190 x 105mm
Weight	730g (approx.)



The RCM Mark (Regulatory Compliance Mark) indicates that the product complies with the relevant guidelines of the ACMA as well as corresponding government requirements for the safety of electrical devices.

Responsible disposal

- **WARNING!** This product contains a rechargeable lithium ion battery. Never throw the appliance into a fire and do not subject it to high temperatures. There is a risk of explosion!
- Do not throw this appliance out with your household rubbish. Electrical and electronic products contain substances which can have a detrimental effect on the environment and human health if disposed of inappropriately. Observe any local regulations regarding the disposal of consumer goods containing a rechargeable battery and dispose of it appropriately for recycling. Contact your local authorities for advice on recycling facilities in your area.

Warranty returns

Should you for any reason need to return this product for a warranty claim, make sure to include all accessories with the product.

Product does not work?

If you encounter problems with this product, or if it fails to perform to your expectations, make sure to contact our After Sales Support Centre on (AU) 1300 886 649 or (NZ) 0800 836 761 for advice.

Distributed by Tempo (Aust) Pty Ltd ABN 70 106 100 252

PO BOX 6056 Frenchs Forest, Australia NSW 2086

Customer Helpline:

(AU) 1300 886 649 (NZ) 0800 836 761

Email: info@tempo.org

For an electronic copy of this manual, please contact our after sales support centre.