



PARKWOOD
MAKE AN ENTRANCE

ENTRANCE DOORS

2017 // 2018 COLLECTION



welcome

NEW ZEALAND & AUSTRALIA'S LARGEST RANGE OF DOORS.

For more than 20 years, Parkwood has been manufacturing and supplying all kinds of doors; from traditional wooden villa styles to the very latest contemporary aluminium designs.

We use traditional joinery techniques coupled with innovative technology to ensure all our doors perform for years and years to come.

The following pages represent the best from our three ranges of doors, aluminium, timber and fibreglass.

- 04 Aluminium Doors
- 06 Timber Doors
- 08 Fibreglass Doors
- 10 Door Finishes
- 12 Door Hardware



aluminium

Powder coat colours.
- See page 10



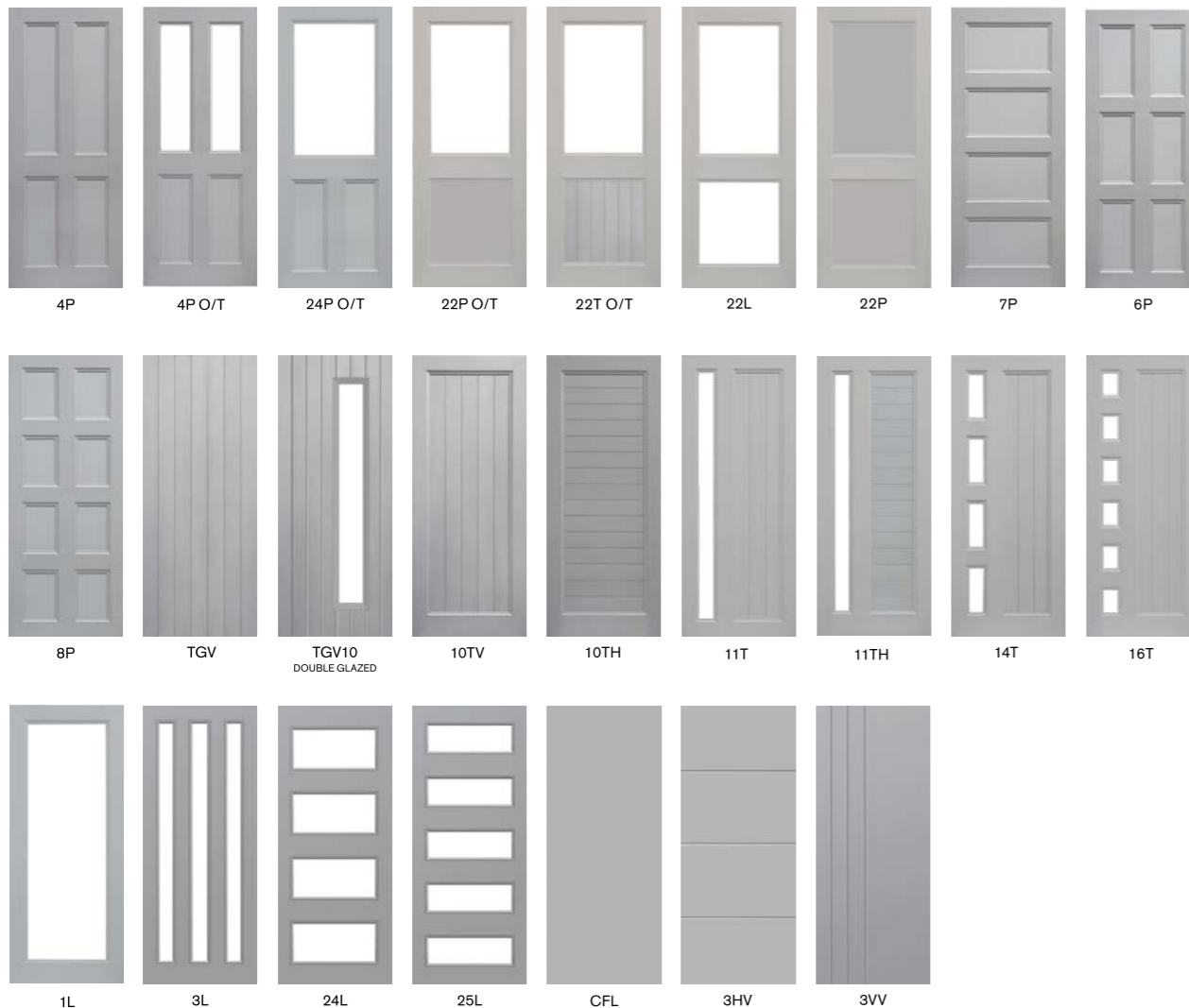
- Powder coated
- Very low maintenance
- Suitable for harsh weather conditions
- All styles come in Thermtek or Strata
- Available in any size



- Better insulation
- Double glazed
- Thermally insulated
- Reduces condensation on door
- Superior noise barrier



- Not thermally broken
- Single glazed



Glazing options available.
- See page 11

Powder coated aluminium doors are low maintenance and durable in situations exposed to harsh weather.

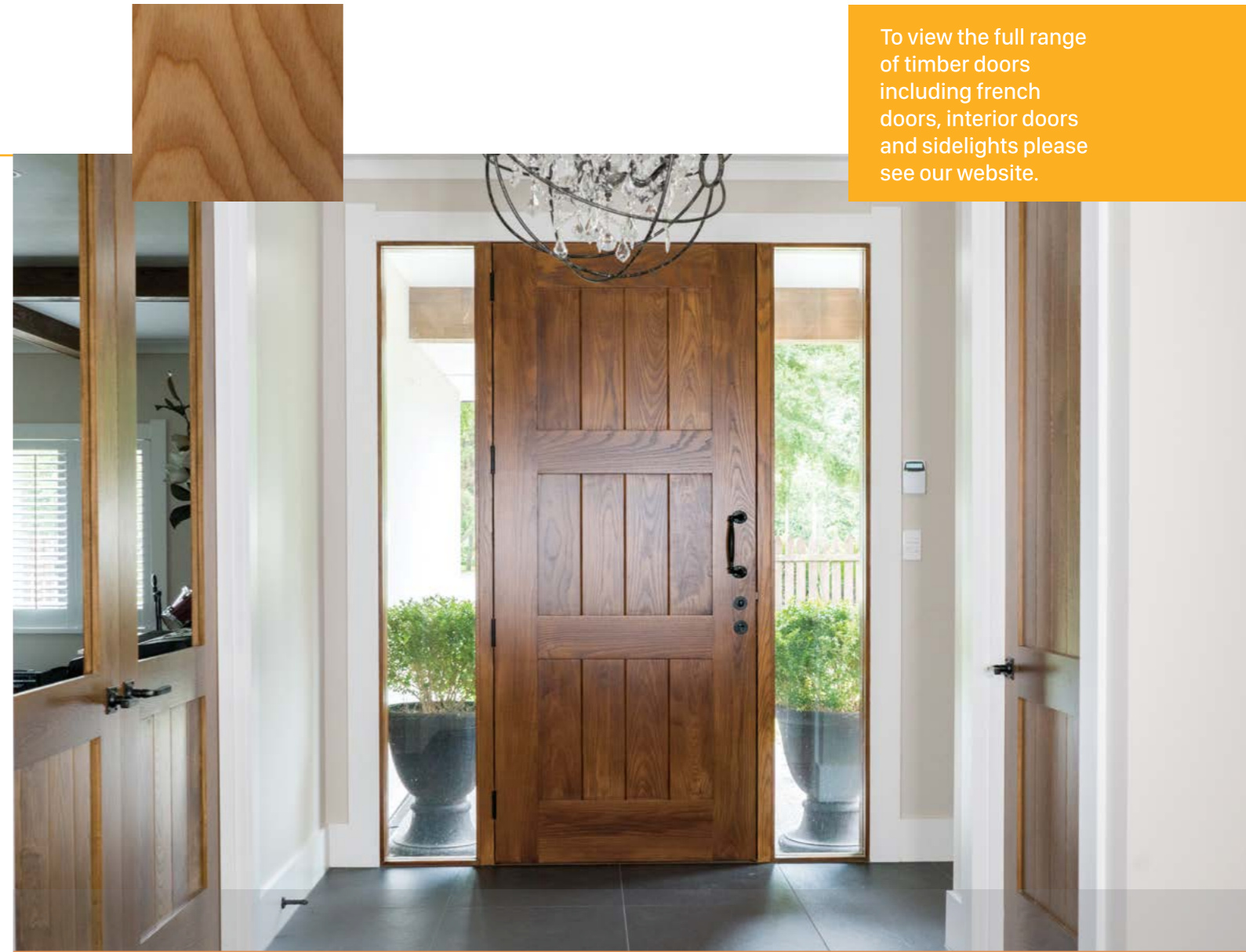
All doors come powdercoated to a colour of your choice. See page 10 for more information.

Their inherent strength makes them ideal for NZ weather conditions.

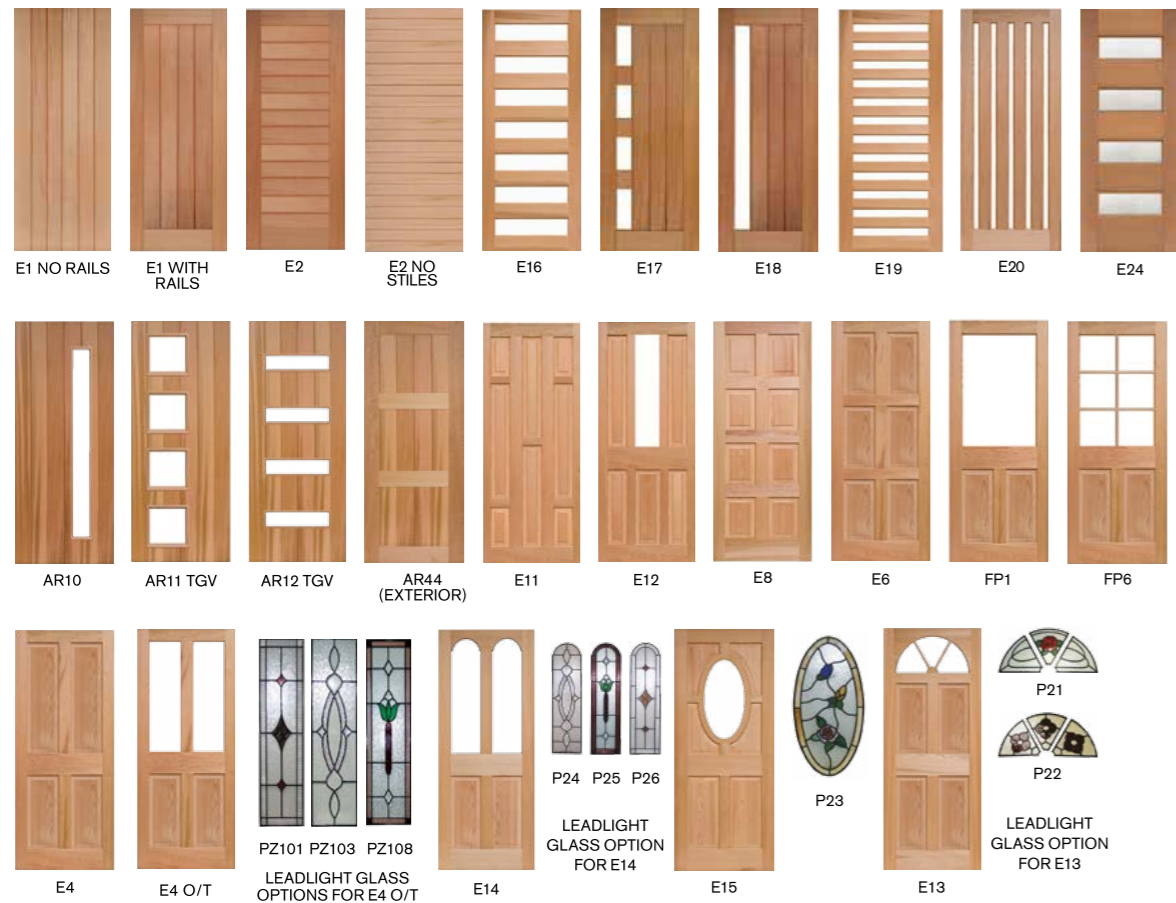
The Parkwood Thermtek offers the additional benefit of insulation that reduces heat loss and provides excellent sound suppression. Thermtek is the obvious choice for all Eco builds, or homes situated on busy roads.

solid timber

- Timber doors are for use in weather protected situations only
- Premium hand-made doors
- All timber hand selected and colour matched. Kiln dried and moisture tested to stop movement
- Available any size up to 2400 x 1200



To view the full range of timber doors including french doors, interior doors and sidelights please see our website.

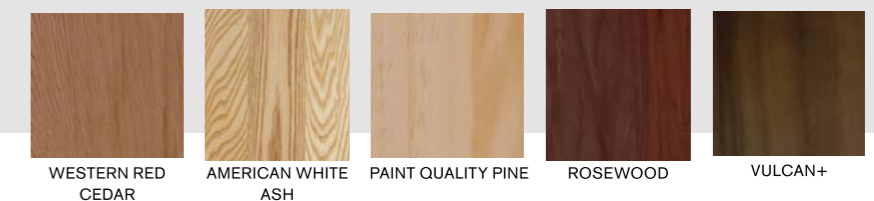


Parkwood Solid Timber doors are all made in New Zealand by local craftsmen from the finest quality timbers, sourced from sustained-yield forests.

Timber doors need to be sheltered from the weather and well sealed on all six sides to ensure top performance and longevity - see Parkwood's full warranty and care guidelines on the website.

They are manufactured with raised and fielded panels, combining strength with elegance.

Timber types available



Glazing options available. - See page 11

fibreglass



- For extreme weather.
- 10 year warranty.
- High impact surface coating that can be painted or stained.
- Solid fibreglass edges - clean & tidy, which can be trimmed or rebated.
- Polyfoam resin engineered core for high insulation.
- Better thermal r-rating than aluminium and timber doors.
- LVL styles and rails for superior stability. No warp or bowing.
- All designs available in woodgrain or smooth finish, except panel doors.
- Sizes up to 2400 x 1060mm.
- W = Woodgrain finish.
- S = Smooth finish.



All doors are double glazed clear or etchlite



1980 X 810 / 860 IN WOODGRAIN ONLY.



Parkwoods fibreglass doors are the best on the market. Duramax Fibreglass Doors won't rust, rot, twist or dent.

Choose either a woodgrain or smooth skin to be painted or stained.

door finishes

Aluminium

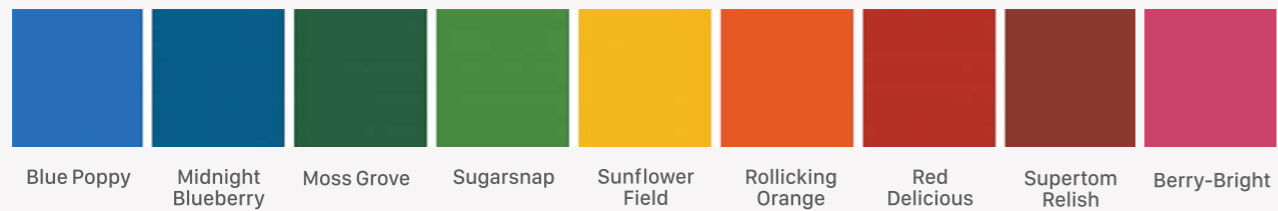
Aluminium doors are powder coated to a colour of your choice. Choose from one of the colours below, or check out our website for more options.



Realistic woodgrain powder coat finishes are also available, such as "Dark Cedar". Check out our website.

Botanic Bounty

An exclusive range of bright powdercoat colours specifically designed with the entrance in mind. Show your personality at the front door with these modern colours.



Powder coat finishes require a certain level of care and maintenance to meet the long warranty periods. Colours are indicative only. Please request actual samples before confirming your choice of colour.

Fibreglass

Fibreglass doors can be painted or stained to a colour of your choice. Black is not recommended. Finishing instructions are available on our website.

Timber - D.I.Y door finishing kit

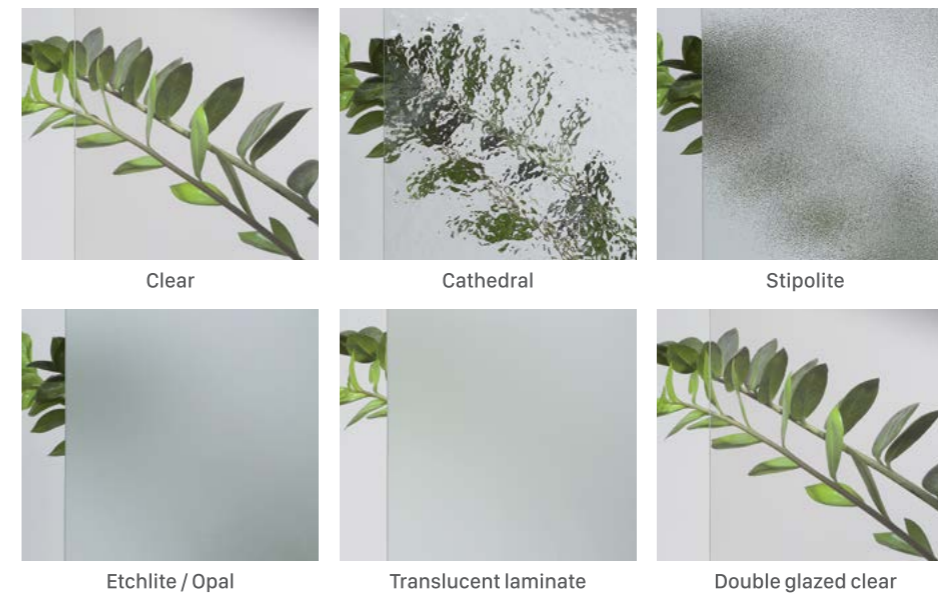
Stocked in all good hardware stores.

Contains all the required products and equipment, including detailed instructions, to stain and seal your timber door yourself. See our website for an up-to-date list of stockists.



Glass

Timber and aluminium doors can be glazed in a variety of glass types.



door hardware

All sets include lock & key.
Pull handles in stainless steel, and other furniture in brushed nickel.



Passion
Square lever handle set



Zest
Square lever handle set



Digital lock - Thumb turn
1340BN



Colonel
450mm or 600mm round pull handle & lock kit



Regal
450mm or 600mm square pull handle & lock kit



Digital lock - Qube
1342BN



Ultra
Round, brushed nickel finish solid brass gripset with internal knob



Deluxe
Square, brushed nickel finish solid brass gripset with internal knob

Parkwood offer a range of hardware options to further enhance your entranceway, from the popular gripset to modern pull handles and lock sets.

Parkwood can machine out for your hardware to save the hassle and risk of machining on site.



Parkwood is a sustainable choice

We appreciate and rely on the natural beauty and purity of our environment and the quality of the timber grown in our forests. We do not take these things for granted and we do all we can to protect our environment and safeguard it for future generations.

Who is Parkwood?

Established in 1993, Parkwood is a privately owned New Zealand family business synonymous with craftsmanship and the manufacture of best quality entrance doors, shutters and interior doors.

Visit our website for:

- Complete entrance door range
- Interior door range
- The door selector - choose your new door in a house setting similar to your own



Warranty

Parkwood accepts no liability for mistaken impressions gained from drawings or photographs of our products. Our designs and specifications are subject to change and improvement over time and actual product and specifications can sometimes differ slightly from what is shown. Check the latest written specifications with your supplier or ask to view an actual sample if in doubt.

Parkwood doors come with a 5-year warranty on all doors.

Timber doors are designed for use in weather protected situations only (min surfeit of 1200mm and not exposed for more than 4 hours or direct sunlight). The Parkwood Warranty will not be effective if the 'care for your door' sticker on the finished door is not heeded. This includes requirements that the door is sealed on all six sides with the relevant product from any of the following ranges: Sikkens, Cabots or Intergrain.

Fibreglass doors must be pre-finished with the same paint/stain and same colour both sides of the door. A colour with LRV greater than 10% must be used. Parkwood don't recommend dark gloss colours.

Parkwood's warranty covers repair or replacement if our workmanship is not up to 'full' standard. The standard that Parkwood considers acceptable (full) applies to every door we supply and is outlined in our separate 'Warranty Document'.

Warranty plus

Parkwood offers an additional level of assurance which includes:

- The standard door repair or replacement as outlined in the warranty
- Plus door fitting
- Plus door finishing
- Plus re-fitting
- Warranty Plus is available for \$30 per door. Please read the terms and conditions as outlined in the 'Warranty Document'.
- To view visit our website: www.parkwooddoors.co.nz





New Zealand

10 London Street
PO Box 672
Wanganui 4540
New Zealand

Phone: 06 349 1818

Fax: 06 343 6184

Email: sales@parkwooddoors.co.nz

www.parkwooddoors.co.nz

Australia

Tel: 1800 681 586

Email: sales@parkwooddoors.com.au

www.parkwooddoors.com.au