



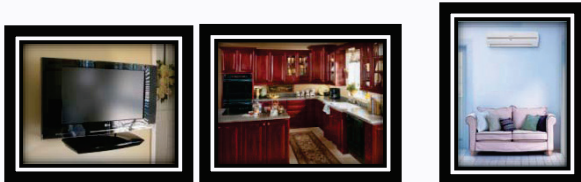
### Product Description

The New DrillerToggle™ supplies extra holding power in drywall with it's strong toggling mechanism. The self drilling features eliminates all the extra hassles and messes of installing a regular Toggle. The unique special features are: A fine centered point that helps guide the anchor into the wall with a flawless precision. A sharp cutting edge that reduces the force required to cut the material. A special locking blades and a powerful Toggling Mechanism that hold tight behind drywall.

### Features & Benefits

- ▶ Fast & Easy to install
- ▶ No pre-drilling
- ▶ All you need is a screwdriver
- ▶ Extra strong holding power
- ▶ Supplied with a Bolt
- ▶ Totally rust proof

### Perfect for:



Curtains, Medium Flat Screen TV's, Kitchen cabinets, shelving et...

### Packagings



### Product sizes & Materials



- 1/8" x 2" Zinc/Nylon
- 1/8" x 3" Zinc/Nylon
- 3/16" x 2" Zinc/Nylon
- 3/16" x 3" Zinc/Nylon
- 1/4" x 3" Zinc/Nylon
- 1/4" x 4" Zinc/Nylon

### Suitable Base Materials

- ▶ Drywall 3/8
- ▶ Drywall 1/2
- ▶ Drywall 5/8



Hollow Wall Anchors



## Load Capacities

Material	Size	Material	PULL MAX lbs	PULL SAFE lbs	SHEAR MAX lbs	SHEAR SAFE lbs	PULL MAX kg	PULL SAFE kg	SHEAR MAX kg	SHEAR SAFE kg
3/8 Drywall 3/8 Wallboard 10 mm	1/8" X 2"	Zinc / Nylon	83	42	150	75	38	19	68	34
	1/8" X 3"	Zinc / Nylon	83	42	150	75	38	19	68	34
	3/16" X 2"	Zinc / Nylon	100	50	166	83	45	23	75	38
	3/16" X 3"	Zinc / Nylon	100	50	166	83	45	23	75	38
	1/4" X 3"	Zinc / Nylon	116	58	183	92	53	26	83	42
	1/4" X 4"	Zinc / Nylon	116	58	183	92	53	26	83	42

Material	Size	Material	PULL MAX lbs	PULL SAFE lbs	SHEAR MAX lbs	SHEAR SAFE lbs	PULL MAX kg	PULL SAFE kg	SHEAR MAX kg	SHEAR SAFE kg
1/2 Drywall 1/2 Wallboard 13 mm	1/8" X 2"	Zinc / Nylon	100	50	180	90	45	23	82	41
	1/8" X 3"	Zinc / Nylon	100	50	180	90	45	23	82	41
	3/16" X 2"	Zinc / Nylon	120	60	200	100	54	27	91	45
	3/16" X 3"	Zinc / Nylon	120	60	200	100	54	27	91	45
	1/4" X 3"	Zinc / Nylon	140	70	220	110	64	32	100	50
	1/4" X 4"	Zinc / Nylon	140	70	220	110	64	32	100	50

Material	Size	Material	PULL MAX lbs	PULL SAFE lbs	SHEAR MAX lbs	SHEAR SAFE lbs	PULL MAX kg	PULL SAFE kg	SHEAR MAX kg	SHEAR SAFE kg
5/8 Drywall 5/8 Wallboard 16 mm	1/8" X 2"	Zinc / Nylon	150	75	270	135	68	34	122	61
	1/8" X 3"	Zinc / Nylon	150	75	270	135	68	34	122	61
	3/16" X 2"	Zinc / Nylon	180	90	300	150	82	41	136	68
	3/16" X 3"	Zinc / Nylon	180	90	300	150	82	41	136	68
	1/4" X 3"	Zinc / Nylon	210	105	330	165	95	48	150	75
	1/4" X 4"	Zinc / Nylon	210	105	330	165	95	48	150	75

\*Allowable load capacities are calculated using applied safety factor of 2.0 in the SAFE column.

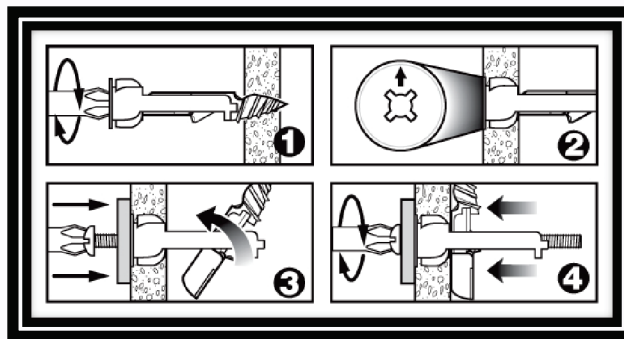
## Tools required



No Pre-Drilling  
Screw Driver: # 2 Phillips or #3 Phillips

## Installation instructions

- Using a screwdriver, pierce the tip of the DrillerToggle™ into drywall/ wallboard.
- Turn clockwise until flush with wall.
- Insert the screw through object you need to afix and push into the DrillerToggle™, to position the toggle behind the drywall/wallboard.
- Turn clockwise until you feel a firm resistance.



Hollow Wall Anchors