

# RYOBI®

R18DA

ORIGINAL INSTRUCTIONS

# 18V DRAIN AUGER



## **Important!**

It is essential that you read the instructions in this manual before assembling, operating and maintaining the product.

Subject to technical modification.

Safety, performance, and dependability have been given top priority in the design of your drain auger.

## INTENDED USE

The product is intended to be used only by adults who have read and understood the instructions and warnings in this manual, and can be considered responsible for their actions.

The product is intended for clearing obstructions from sinks, toilets, and bathtubs.

Do not use the product in any way other than those stated for intended use.

## GENERAL POWER TOOL SAFETY WARNINGS

### WARNING

**Read all safety warnings and all instructions.** Failure to follow the warnings and instructions may result in electric shock, fire and/or serious injury.

**Save all warnings and instructions for future reference.**

The term "power tool" in the warnings refers to your mains-operated (corded) power tool or battery-operated (cordless) power tool.

### 1) WORK AREA SAFETY

- **Keep work area clean and well lit.** Cluttered or dark areas invite accidents.
- **Do not operate power tools in explosive atmospheres, such as in the presence of flammable liquids, gases or dust.** Power tools create sparks which may ignite the dust or fumes.
- **Keep children and bystanders away while operating a power tool.** Distractions can cause you to lose control.

### 2) ELECTRICAL SAFETY

- **Power tool plugs must match the outlet. Never modify the plug in any way. Do not use any adapter plugs with earthed (grounded) power tools.** Unmodified plugs and matching outlets will reduce risk of electric shock.
- **Avoid body contact with earthed or grounded surfaces, such as pipes, radiators, ranges and refrigerators.** There is an increased risk of electric shock if your body is earthed or grounded.
- **Do not expose power tools to rain or wet conditions.** Water entering a power tool will increase the risk of electric shock.
- **Do not abuse the cord. Never use the cord for carrying, pulling or unplugging the power tool. Keep cord away from heat, oil, sharp edges or moving parts.** Damaged or entangled cords increase the risk of electric shock.

- **When operating a power tool outdoors, use an extension cord suitable for outdoor use.** Use of a cord suitable for outdoor use reduces the risk of electric shock.
- **If operating a power tool in a damp location is unavoidable, use a residual current device (RCD) protected supply.** Use of an RCD reduces the risk of electric shock.

### 3) PERSONAL SAFETY

- **Stay alert, watch what you are doing and use common sense when operating a power tool. Do not use a power tool while you are tired or under the influence of drugs, alcohol or medication.** A moment of inattention while operating power tools may result in serious personal injury.
- **Use personal protective equipment. Always wear eye protection.** Protective equipment such as dust mask, non-skid safety shoes, hard hat or hearing protection used for appropriate conditions will reduce personal injuries.
- **Prevent unintentional starting. Ensure the switch is in the off-position before connecting to power source and/or battery pack, picking up or carrying the tool.** Carrying power tools with your finger on the switch or energising power tools that have the switch on invites accidents.
- **Remove any adjusting key or wrench before turning the power tool on.** A wrench or a key left attached to a rotating part of the power tool may result in personal injury.
- **Do not overreach. Keep proper footing and balance at all times.** This enables better control of the power tool in unexpected situations.
- **Dress properly. Do not wear loose clothing or jewellery. Keep your hair, clothing and gloves away from moving parts.** Loose clothes, jewellery or long hair can be caught in moving parts.
- **If devices are provided for the connection of dust extraction and collection facilities, ensure these are connected and properly used.** Use of dust collection can reduce dust-related hazards.

### 4) POWER TOOL USE AND CARE

- **Do not force the power tool. Use the correct power tool for your application.** The correct power tool will do the job better and safer at the rate for which it was designed.
- **Do not use the power tool if the switch does not turn it on and off.** Any power tool that cannot be controlled with the switch is dangerous and must be repaired.
- **Disconnect the plug from the power source and/or the battery pack from the power tool before making any adjustments, changing accessories or storing power tools.** Such preventive safety

measures reduce the risk of starting the power tool accidentally.

- **Store idle power tools out of the reach of children and do not allow persons unfamiliar with the power tool or these instructions to operate the power tool.** Power tools are dangerous in the hands of untrained users.
- **Maintain power tools. Check for misalignment or binding of moving parts, breakage of parts and any other condition that may affect the power tool's operation. If damaged, have the power tool repaired before use.** Many accidents are caused by poorly maintained power tools.
- **Keep cutting tools sharp and clean.** Properly maintained cutting tools with sharp cutting edges are less likely to bind and are easier to control.
- **Use the power tool, accessories and tool bits etc, in accordance with these instructions, taking into account the working conditions and the work to be performed.** Use of the power tool for operations different from those intended could result in a hazardous situation.

## 5) BATTERY TOOL USE AND CARE

- **Recharge only with the charger specified by the manufacturer.** A charger that is suitable for one type of battery pack may create a risk of fire when used with another battery pack.
- **Use power tools only with specifically designated battery packs.** Use of any other battery packs may create a risk of injury and fire.
- **When battery pack is not in use, keep it away from other metal objects, like paper clips, coins, keys, nails, screws or other small metal objects that can make a connection from one terminal to another.** Shorting the battery terminals together may cause burns or a fire.
- **Under abusive conditions, liquid may be ejected from the battery; avoid contact. If contact accidentally occurs, flush with water. If liquid contacts eyes, additionally seek medical help.** Liquid ejected from the battery may cause irritation or burns.

## 6) SERVICE

- **Have your power tool serviced by a qualified repair person using only identical replacement parts.** This will ensure that the safety of the power tool is maintained.

## DRAIN AUGER SAFETY WARNINGS

### WARNING

The product is not intended for use by persons (including children) with reduced physical, sensory or mental capabilities, or lack of experience and knowledge, unless they have been given supervision or instruction concerning use of the product by a person responsible for their safety.

Children should be supervised to ensure that they do not play with the product.

- Always wear safety goggles or eye protection with side shields marked to comply with AS/NZS 1337 when assembling parts, operating the product, or performing maintenance. Following this rule will reduce the risk of serious personal injury.
- Position the drain auger within 100 mm of the drain or inlet being cleared. Operating the tool at greater distances can result in the cable twisting or binding.
- Avoid running the tool in reverse for extended periods of time as this can damage the cable.
- Never place your hand near the drum or the cable as it is rotating. Following this rule will reduce the risk of serious personal injury.
- Clogged drains may contain bacteria, cleaning solutions, or other potentially harmful substances. Always wear protective clothing, eye protection, and gloves while operating this tool to prevent these substances from contacting your skin and eyes.
- When removing the cable from a drain, remove it slowly to avoid "splash back". Use warm, soapy water to clean hands and other body parts that may have been exposed to potentially harmful substances.
- Battery tools do not have to be plugged into an electrical outlet; therefore, they are always in operating condition. Be aware of possible hazards when not using your battery tool or when changing accessories. Following this rule will reduce the risk of electric shock, fire, or serious personal injury.
- Do not place battery tools or their batteries near fire or heat. This will reduce the risk of explosion and possibly injury.
- Do not crush, drop or damage battery pack. Do not use a battery pack or charger that has been dropped or received a sharp blow. A damaged battery is subject to explosion. Properly dispose of a dropped or damaged battery immediately.
- Batteries can explode in the presence of a source of ignition, such as a pilot light. To reduce the risk of serious personal injury, never use any cordless product in the presence of open flame. An exploded battery can propel debris and chemicals. If exposed, flush with water immediately.

- Do not charge battery tool in a damp or wet location. Following this rule will reduce the risk of electric shock.
- For best results, your battery tool should be charged in a location where the temperature is more than 10°C but less than 38°C. To reduce the risk of serious personal injury, do not store outside or in vehicles.
- Under extreme usage or temperature conditions, battery leakage may occur. If liquid comes in contact with your skin, wash immediately with soap and water. If liquid gets into your eyes, flush them with clean water for at least 10 minutes, then seek immediate medical attention. Following this rule will reduce the risk of serious personal injury.
- Save these instructions. Refer to them frequently and use them to instruct others who may use this tool. If you loan someone this tool, loan them these instructions also.

## ASSEMBLY

### WARNING

Do not use the product if it is not completely assembled or if any parts appear to be missing or damaged. Use of a product that is not properly and completely assembled or with damaged or missing parts could result in serious personal injury.

### WARNING

Do not attempt to modify the product or create accessories or attachments not recommended for use with the product. Any such alteration or modification is misuse and could result in a hazardous condition leading to possible serious personal injury.

## OPERATION

### WARNING

Do not allow familiarity with the product to make you careless. Remember that a careless fraction of a second is sufficient to inflict serious injury.

### WARNING

Always remove the battery pack from the product when you are assembling parts, cleaning, or when not in use. Removing these energy sources will prevent accidental starting that could cause serious personal injury.

### WARNING

Always wear eye protection with side shields marked to comply with AS/NZS 1337. Failure to do so could result in objects being thrown into your eyes and other possible serious injuries.

## CAUTION

Do not use any attachments or accessories not recommended by the manufacturer of the product. The use of attachments or accessories not recommended can result in serious personal injury.

## INSTALLING/REMOVING BATTERY PACK

See figure 1.

1. Lock the switch trigger by placing the direction of rotation selector in center position.
2. Insert the battery pack into the product as shown.
3. Make sure the latches on each side of the battery pack snap in place and that battery pack is secured in the product before beginning operation.
4. Depress the latches to remove the battery pack.

For complete charging instructions, see the operator's manuals for your battery pack and charger.

## VARIABLE SPEED SWITCH TRIGGER

See figure 2.

The variable speed switch trigger delivers higher speed with increased trigger pressure and lower speed with decreased trigger pressure.

To switch the product ON, depress the switch trigger. To switch the product OFF, release the switch trigger and allow the cable to come to a complete stop.

## DIRECTION OF ROTATION SELECTOR

### (FORWARD/REVERSE/CENTER LOCK)

See figure 2.

Set the direction of rotation selector in the OFF (center lock) position to lock the switch trigger and help prevent accidental starting when not in use.

Position the direction of rotation selector to the left of the switch trigger for forward operation. Position the selector to the right of the switch trigger to reverse the direction.

**NOTE:** The product will not run unless the direction of rotation selector is pushed fully to the left or right.

**NOTICE:** To prevent gear damage, always allow the cable to come to a complete stop before changing the direction of rotation.

### WARNING

Battery tools are always in operating condition. Lock the switch when not in use or carrying at your side, when installing or removing the battery pack, and when manually advancing or retracting the cable.

## AUTO-FEED LOCK

See figure 3.

The auto-feed lock feature allows the user to advance the



cable using the switch trigger without holding the pommel.

1. To engage, squeeze the pommel and push the auto-feed lock button to the left.
2. To release, squeeze the pommel and push the auto-feed lock button to the right.

### ADVANCING/RETRACTING THE CABLE

See figure 4 and 5.

#### To manually advance the cable:

1. Lock the switch trigger by placing the direction of rotation selector in center position.
2. Hold the front handle with one hand and advance the cable with the other.

**NOTE:** Once the cable has been advanced to your desired length, it can be locked in place with the cable lock lever. Move the lever down to engage the clamp and up to disengage.

3. To retract the cable, hold the front handle with one hand and push the cable back with the other.

**NOTICE:** Do not advance or retract the cable using the switch trigger unless the cable is in a drain pipe.

#### To advance the cable using the switch trigger:

1. Squeeze the pommel and, if desired, engage the auto-feed lock.
2. Place the direction of rotation selector in the forward position.
3. Squeeze and hold the switch trigger to advance the cable.

**NOTE:** Once the cable has been advanced to your desired length, it can be locked in place with the cable lock lever. Move the lever down to engage the clamp and up to disengage.

**NOTICE:** Do not attempt to advance or retract the cable using the switch trigger with the clamp engaged.

4. To retract the cable, place the direction of rotation selector in the reverse position, squeeze the pommel, and depress the switch trigger.

**NOTICE:** Do not run the drain auger in forward or reverse for extended periods of time. Failure to follow these instructions can result in damage to the tool.

### USING THE DRAIN AUGER

See figure 6 and 7.

The drain auger can be used to clear obstructions from a variety of drains including sink, bathtub, and toilet drains.

**NOTE:** This product can be used to clear drain pipes with minimum diameters of 19 mm and maximum diameters of 50.8 mm.

#### To clear obstructions:

1. Remove the cap from the end of the cable.

2. When removing an obstruction from a sink or a bathtub, it may be necessary to remove the stopper or overflow cover to gain access to the drain pipe. Toilet drains can be accessed directly through the base of the bowl.

3. Hold the drain auger within 101.6 mm (4") of the drain or overflow, and manually feed the cable into the drain pipe.

**NOTE:** Advance the cable slowly at first. Advancing it too rapidly can result in twisting or binding.

4. After feeding about 152.4 mm (6") of cable into the drain, you may begin advancing the cable using the switch trigger or continue advancing it manually.

5. The cable should advance freely through the drain pipe until it contacts the obstruction or is caught in a P-trap.

6. If the cable is caught in a P-trap, additional force or increased trigger pressure should be enough to advance it past the bend in the pipe.

7. If the cable has contacted an obstruction, there are two ways to remove it:

- Advance the cable by squeezing the switch trigger. Hold the trigger for several seconds allowing the tip of the cable to bore into the obstruction. If the cable stops rotating, release the switch trigger to avoid kinking or damaging the cable. Clamp the cable in place, then push or pull until the obstruction is dislodged. Unclamp the cable and slowly retract it from the drain pipe.

- Release the pommel and, if necessary, disengage the auto-feed lock. Squeeze the switch trigger. The cable will rotate, but it will not advance. Hold the trigger for several seconds allowing the obstruction to wrap around the cable. If the cable stops rotating, release the switch trigger to avoid kinking or damaging the cable. Then slowly retract the cable and pull the obstruction through the drain.

**NOTE:** When removing the cable from a drain, remove it slowly to avoid "splash back".

8. Once the obstruction is cleared, attempt to flush your toilet or run water through your drain to confirm that the water is flowing freely.

9. After the cable has been properly cleaned, as described in the next section, place the cap on the end of the cable.

### CLEANING THE DRAIN AUGER

See figure 8 and 9.

The drain auger should be cleaned after each use to prevent contamination and residue build up.

#### To drain the drum:

1. Remove the battery pack from the tool.
2. Hold the tool at an angle and lift the drain tab located on the back of the tool.
3. Allow any liquids inside the drum to pour down a drain



or into a container approved for liquid waste.

### To clean the cable:

1. Remove the battery pack from the tool.
2. Using a clean cloth and warm soapy water, pull the cable out from the tool, cleaning it as it advances. Continue until the cable has been fully advanced and completely cleaned.
3. Using a clean, dry cloth, push the cable back into the tool, drying it as it retracts. Continue until the cable has been fully retracted.
4. To ensure that no water entered the tool, drain the drum as described earlier.
5. Place the cap on the end of the cable.

**NOTICE:** Do not advance or retract the cable using the switch trigger unless the cable is in a drain pipe.

## MAINTENANCE

### ⚠ WARNING

Always remove the battery pack from the product and disconnect from the power supply when you are assembling parts, cleaning, or when not in use. Removing battery pack or unplugging extension cord will prevent accidental starting that could cause serious personal injury.

- Avoid using solvents when cleaning plastic parts. Most plastics are susceptible to damage from various types of commercial solvents and can be damaged by their use. Use dry cloths to remove dirt, dust, oil, grease, etc.

### ⚠ WARNING

Do not, at any time, let brake fluids, gasoline, petroleum-based products, penetrating oils, etc., come in contact with plastic parts. They contain chemicals that can damage, weaken, or destroy plastic.

- When servicing, use only original manufacturer's replacement parts. Use of any other part could create a hazard or cause product damage.
- Always wear safety goggles or safety glasses with side shields during power tool operation or when blowing dust. If operation is dusty, also wear a dust mask.
- For greater safety and reliability, all repairs should be performed by an authorised service centre.

## LUBRICATION

All of the bearings in the product are lubricated with a sufficient amount of high grade lubricant for the life span of the product under normal operating conditions. Therefore, no further lubrication is required.

## ENVIRONMENTAL PROTECTION



Recycle raw materials instead of disposing of as waste. The machine, accessories and packaging should be sorted for environmental-friendly recycling.

## SYMBOLS



Safety alert



Regulatory Compliance Mark (RCM). Product meets applicable regulatory requirements.



Please read the instructions carefully before starting the machine.

V

Volts



Direct current



Do not expose to rain or use in damp locations.



Wear protective gloves



Wear eye protection



Risk of long hair being drawn into rotating drum.



Risk of loose clothing being drawn into rotating drum.



Waste electrical products should not be disposed of with household waste. Please recycle where facilities exist. Check with your local authority or retailer for recycling advice.

The following signal words and meanings are intended to explain the levels of risk associated with this product:

### ⚠ DANGER

Indicates an imminently hazardous situation, which, if not avoided, will result in death or serious injury.

### ⚠ WARNING

Indicates a potentially hazardous situation, which, if not avoided, could result in death or serious injury.

### ⚠ CAUTION

Indicates a potentially hazardous situation, which, if not avoided, may result in minor or moderate injury.

### CAUTION

(Without Safety Alert Symbol) Indicates a situation that may result in property damage.

1. Rear handle
2. Direction of rotation selector
3. Switch trigger
4. Auto-feed lock button
5. Front handle
6. Pommel
7. Cable
8. Cable lock lever
9. Cap
10. Drain tab
11. Battery port
12. Battery pack
13. Depress latches to remove battery pack
14. Reverse
15. Forward
16. Unlocked position

17. Locked position
18. To disengage clamp
19. To engage clamp
20. Sink stopper
21. Sink drain
22. Obstruction
23. P-trap

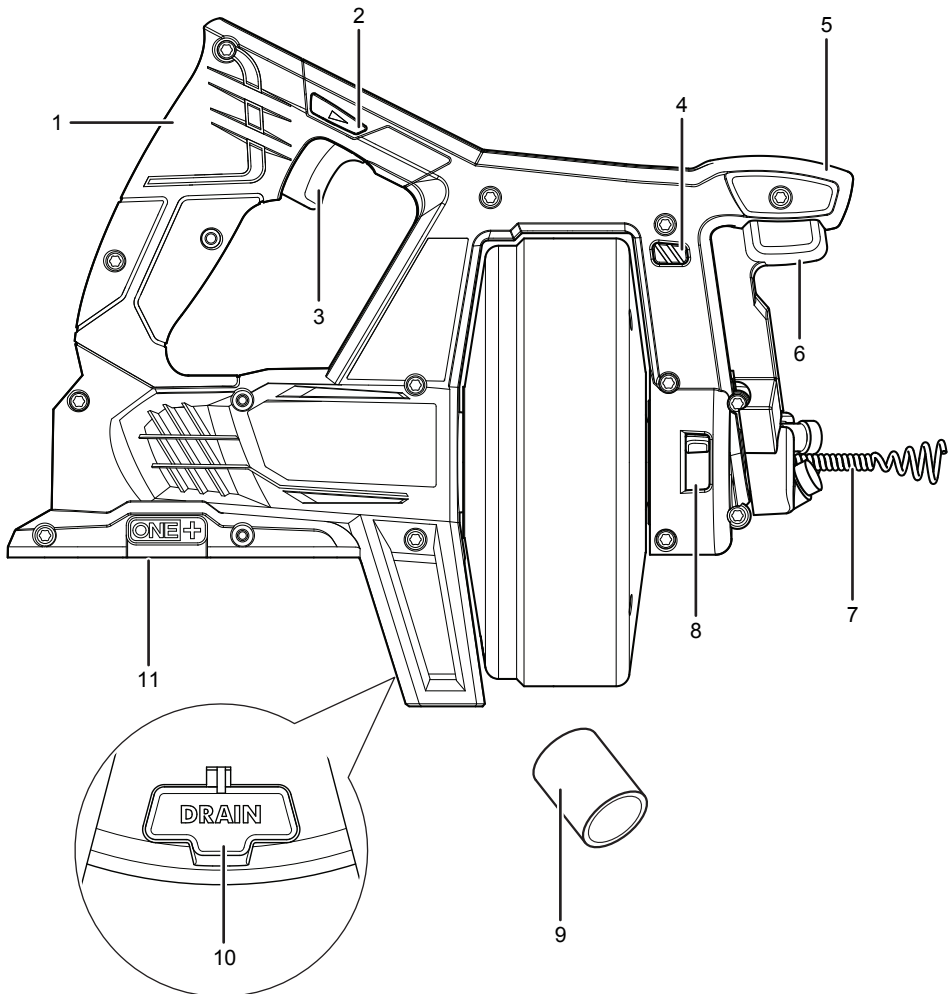




Fig. 1

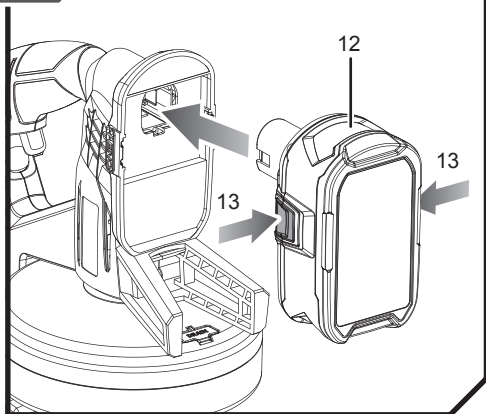


Fig. 2

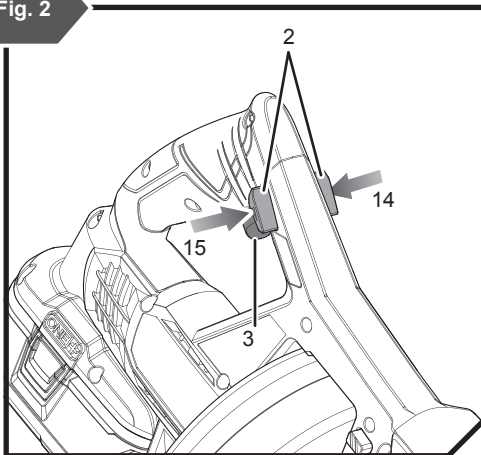


Fig. 3

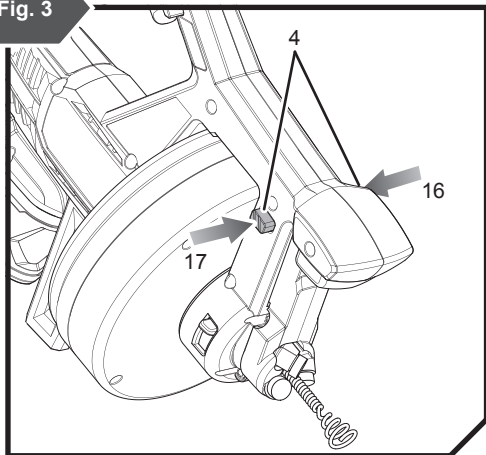


Fig. 4

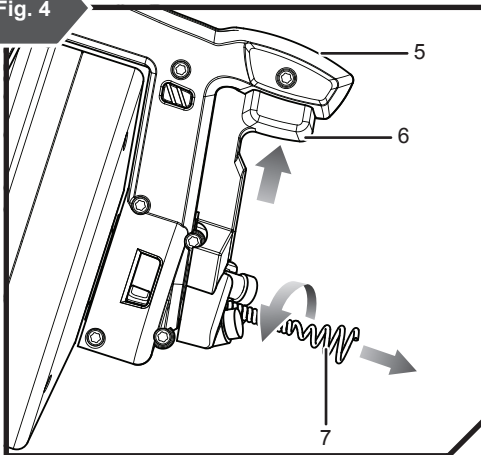


Fig. 5

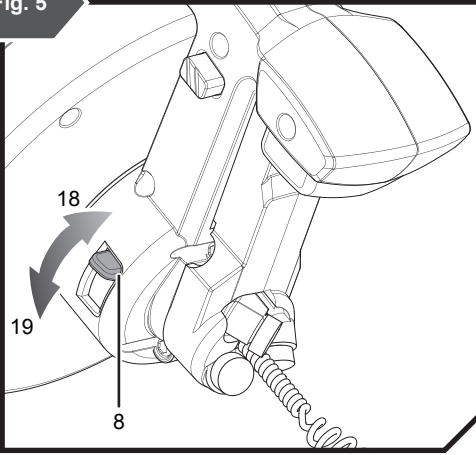


Fig. 6

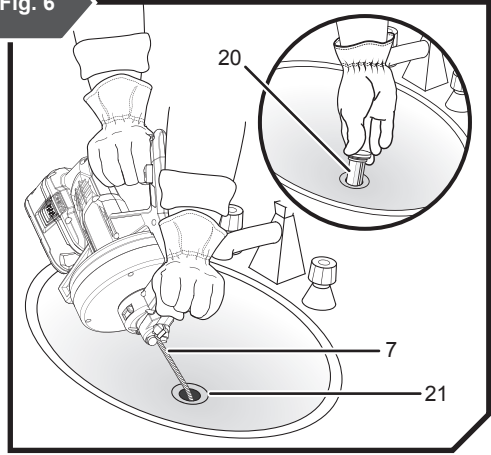


Fig. 7

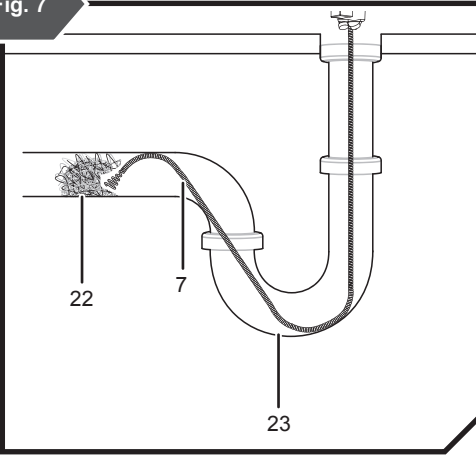


Fig. 8

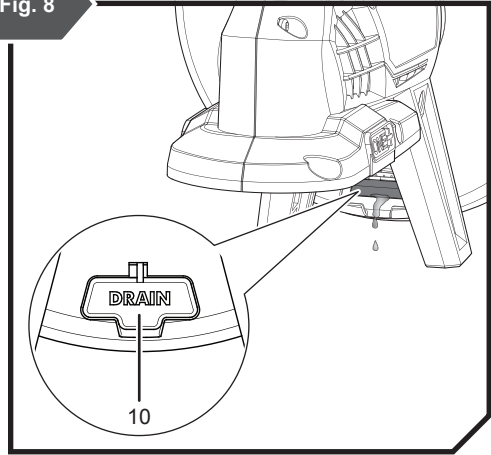
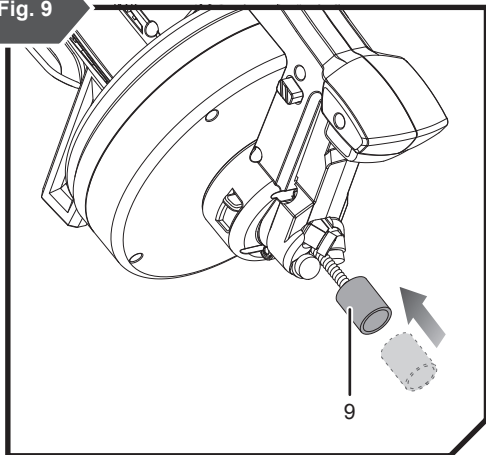



Fig. 9



## PRODUCT SPECIFICATIONS

18V drain auger

Model	R18DA
Voltage	18 V 
Cable diameter	6.35 mm (1/4")
Cable length	7620 mm (25 ft)
Minimum pipe size (diameter)	19 mm (3/4")
Maximum pipe size (diameter)	50.8 mm (2")

## BATTERY AND CHARGER

Model	Compatible battery pack (not included)	Compatible charger (not included)
Lithium-Ion	RB18L13	BCS618G
	RB18L15	BCL14181H
	RB18L25	BCL14183H
	RB18L26	BCL1418IV*
	RB18L40	
RB18L50		

\* for vehicles with 12V DC outlets

Imported by:

**Techtronic Industries (Australia) Pty. Ltd.**  
31 Gilby Road,  
Mount Waverley VIC 3149,  
Australia

**Techtronic Industries New Zealand Ltd.**  
2 Landing Drive, Mangere,  
Auckland, New Zealand 2022