



**PUREPINE**  
MOULDINGS

For the classic look  
and feel of traditional  
painted fences,  
choose Primewood.



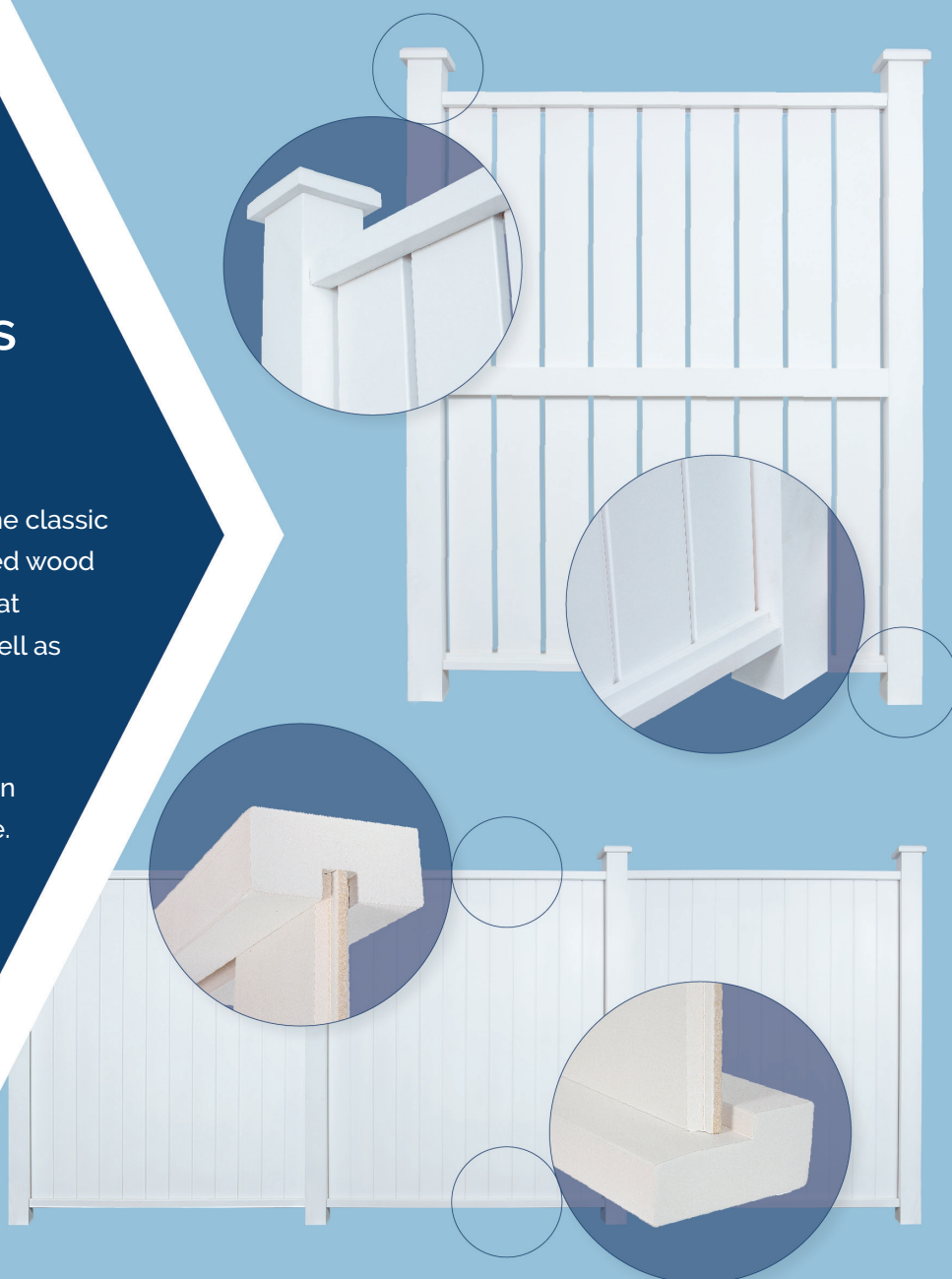
[purepine.co.nz](http://purepine.co.nz)

# Primewood fencing helps turn your outdoor dreams into reality.

Many homeowners appreciate the classic look and feel of traditional painted wood fence. Primewood fences add that traditional touch to a home, as well as providing privacy and security.

A solid privacy fence using the Shiplap or TGV profiles will add an extra touch of solitude to a home. This type of fence can also protect against harsh winds and distracting street noise.

Our Dressed profile palings ensure that a yard is safe for children and pets to enjoy while providing an open feel to any yard.

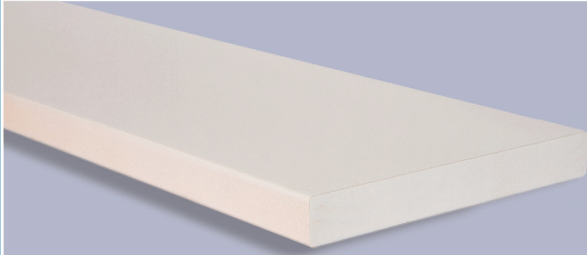


Primewood machine finished palings represent a quality fencing option, they still have a classic, traditional appearance but they have a contemporary, smoother finish. The Primewood fencing range offer durability by combining a robust specification with quality materials that are supplied treated and primed ready for installation.

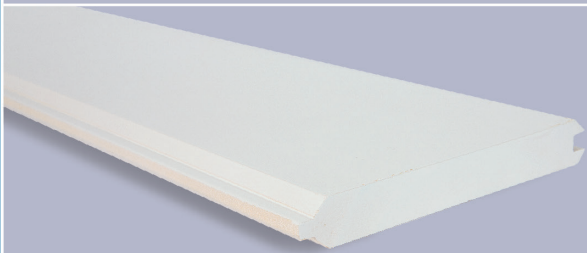


## PUREPINE PRIMEWOOD FENCING — ALL COMPONENTS TREATED AND PRIMED

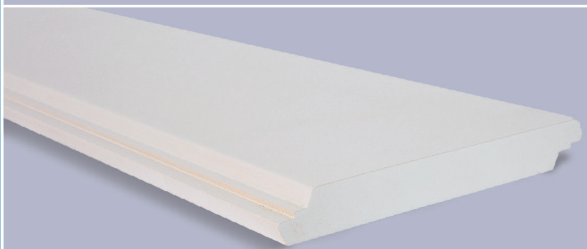
### PALINGS



Primewood  
Square Dressed Paling H3.1  
1.8m x 140 x 18



Primewood  
Tongue and Groove Paling H3.1  
1.8m x 140 x 18



Primewood  
Shiplap Paling H3.1  
1.8m x 140 x 18

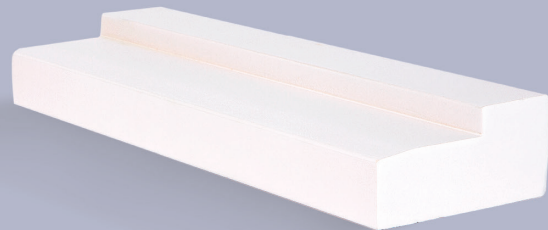
### RAILS



Primewood Top Rail H3.1  
5.4m x 90 x 42



Primewood Middle Rail H3.1  
5.4m x 90 x 42



Primewood Bottom Rail H3.1  
5.4m x 90 x 42

### POSTS



Primewood H5  
Laminated Post  
2.4m x 88 x 88\*



Primewood H5  
Laminated Post  
2.4m x 112 x 112\*

\* Also available in 3.6m length

## Installation and Painting recommendations

All components are manufactured from H3.1 treated finger-jointed radiata pine and have been factory primed with an alkyd (oil based) primer.

Post selection is at the discretion of the owner however we recommend laminated 88 x 88 or 112 x 112 H5 posts to complete the premium look of your fence.

Once the fence has been installed we recommend the paint finishing be completed with a minimum of two premium exterior top coats at an LRV of 45 or higher.

### Disposal

Preserved wood may be disposed of in landfills, or burned in commercial or industrial incinerators or boilers, in accordance with local council rules and regulations.

### Guidelines to assist with maximising the lifespan of your Primewood fence.

- 1 Bottom rail needs to be installed with suitable ground clearance to ensure surface water and soil is not in contact with rail.
- 2 If possible we recommend painting the bottom rail with a top coat before installing as proximity to the ground can make this difficult once in place.
- 3 Prime all cut ends and any exposed timber with a premium timber alkyd primer prior to installation.
- 4 Before painting clean down to remove any dirt and surface contaminants. All nail or screw holes should be filled with suitable wood filler.
- 5 All initial coating and subsequent maintenance is to be done in accordance with the paint manufacturers instructions.

Available from your local Timber Merchant



**PlaceMakers**<sup>®</sup>  
Know how. Can do.

[purepine.co.nz](http://purepine.co.nz)

