

sikkens

Quality that
outshines other
woodstains



Pine



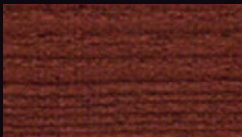
Light Oak



Teak



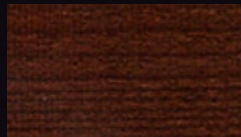
Dark Oak



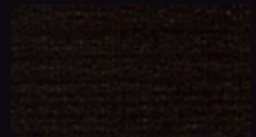
Mahogany



Walnut



Antique Oak



Ebony

Colours are an indication only. The timber substrate will also influence your finished tone.
Dark colours such as ebony will have a shorter maintenance cycle.

Available at
BUNNINGS
warehouse

bunnings.co.nz

Only Sikkens offers:

- Weather protection • High UV protection • Water repellency • Micro porosity • Flexibility
- High transparency • Unique quality finish

SIKKENS CETOL HLSE

Transparent, satin woodcare product for interior and exterior use. Its woodstain like qualities ensure timber grain remains highly visible. Cetol HLSe is microporous allowing the timber to breathe.

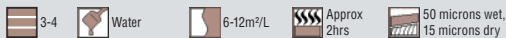
Use: Suitable for most types of timber. Used as a primer/basecoat for Cetol Filter 7 plus or Cetol Deck or Deck Slip Resistant and as a stand alone 3 coat system on cladding, garden furniture, BBQ tables, handrails etc.



SIKKENS CETOL BLX-PRO

Environmentally friendly, water based, transparent, satin woodcare product for interior and exterior use. Its woodstain like qualities ensure timber grain remains highly visible. Cetol BLX-Pro is microporous allowing the timber to breathe. See sikkens.co.nz for colour availability.

Use: Suitable for most types of timber. Used as stand alone 3 or 4 coat system on cladding, joinery, front doors, garage doors, garden furniture, handrails, decks etc.



SIKKENS CETOL CLEARCOAT LB PLUS

Colourless, satin gloss, **low build** preservative for protected east or south facing exterior timber. Contains binary light stabilisers (improved UV resistance), based on alkyd resin. The wood grain remains visible. Microporous, resulting in a humidity-controlling system. Water repellent. Simple maintenance. Abrasion resistant (not scratch proof).

Use: As a primer/basecoat for Cetol Clearcoat HB plus or as a stand alone 3 coat system on protected, south or east facing timber structures. As a maintenance system on intact - still sufficiently pigmented - Cetol HLSe coats. Brush application recommended.



SIKKENS CETOL FILTER 7 PLUS

Maximum durability, film forming, transparent, satin woodcare product based on alkyd resins with added UV filters for exterior use. Weather resistant and highly transparent, Cetol Filter 7 plus is a flexible coating which expands and contracts with the timber instead of forming a rigid shell on the surface. Cetol Filter 7 plus contains powerful UV filters and is microporous.

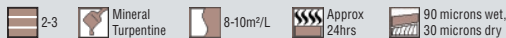
Use: As a topcoat over Cetol HLSe on most types of timber. Common areas of use are joinery, fascia, gables, garage and front doors etc.



SIKKENS CETOL DECK & DECK SLIP RESISTANT

Translucent satin topcoat for use on timber decks. Based on a special oil-alkyd resin combination and selected UV-absorbing pigments. Pigmented natural colour. Highly transparent; ensures optimum visibility of the wood grain. Withstands physical wear. Microporous; allows the wood to breathe. Weather resistant. Water repellent. Cetol Deck Slip Resistant has the same properties as Cetol Deck but includes a slip resistant additive.

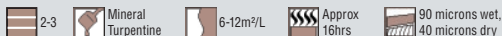
Use: As a topcoat over Cetol HLSe to enhance the natural beauty of timber and to provide additional abrasion resistance. Brush application recommended.



SIKKENS CETOL CLEARCOAT HB PLUS

Colourless, satin gloss, **high build**, preservative for protected east or south facing exterior timber. Contains binary light stabilisers (improved UV resistance), based on alkyd resin. The wood grain remains visible. Microporous, resulting in a humidity-controlling system. Water repellent. Contains mould and algae inhibitors.

Use: As a topcoat over Cetol HLSe or Cetol Clearcoat LB plus on protected, south or east facing timber structures. As a maintenance system on intact - still sufficiently pigmented - Cetol HLSe, Cetol Novatech or Cetol Filter 7 plus coats. Brush application recommended.



KEY



Number of coats



Recommended solvent for wash-up.



Coverage in m²/L



Recoat



Film thickness

Common Exterior Systems	1st coat	2nd coat	3rd coat	4th coat
Joinery	Cetol HLSe	Cetol HLSe	Cetol HLSe	Recommended for exposed areas
	or Cetol HLSe	Cetol Filter 7 plus	Cetol Filter 7 plus	
	or Cetol BLX-Pro	Cetol BLX-Pro	Cetol BLX-Pro	
Front Doors / Garage Doors	Cetol HLSe	Cetol HLSe	Cetol HLSe	Recommended for exposed areas
	or Cetol HLSe	Cetol Filter 7 plus	Cetol Filter 7 plus	
	or Cetol BLX-Pro	Cetol BLX-Pro	Cetol BLX-Pro	
Cladding	Cetol HLSe	Cetol HLSe	Cetol HLSe	Recommended for exposed areas
	or Cetol BLX-Pro	Cetol BLX-Pro	Cetol BLX-Pro	
	Cetol HLSe	Cetol HLSe	Cetol HLSe	
Louvers	Cetol HLSe	Cetol HLSe	Cetol HLSe	Cetol HLSe
	or Cetol BLX-Pro	Cetol BLX-Pro	Cetol BLX-Pro	Cetol BLX-Pro
	Cetol HLSe	Cetol HLSe	Cetol HLSe	Cetol HLSe
Decking / Door Sills	Cetol HLSe	Cetol HLSe	Cetol HLSe	-
	or Cetol BLX-Pro	Cetol BLX-Pro	Cetol BLX-Pro	
	or Cetol HLSe	Cetol Deck	Cetol Deck	
Outdoor Furniture	Cetol HLSe	Cetol HLSe	Cetol HLSe	-
	or Cetol BLX-Pro	Cetol BLX-Pro	Cetol BLX-Pro	
	Cetol TSI	Cetol TSI	Cetol TSI	
Interior Timber	Cetol TSI	Cetol TSI	Cetol TSI	-
	or Cetol HLSe	Cetol TSI	Cetol TSI	

