

CAUTION : PLEASE READ THIS MANUAL

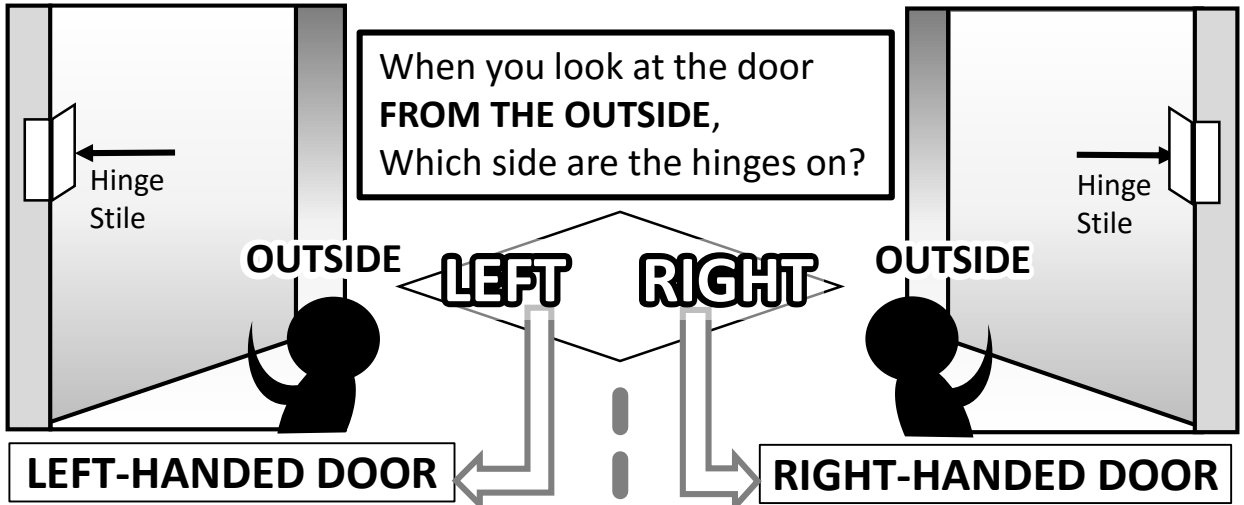
or WATCH THE VIDEO GUIDE BEFORE STARTING INSTALLATION

SHS-3321 QUICK GUIDE

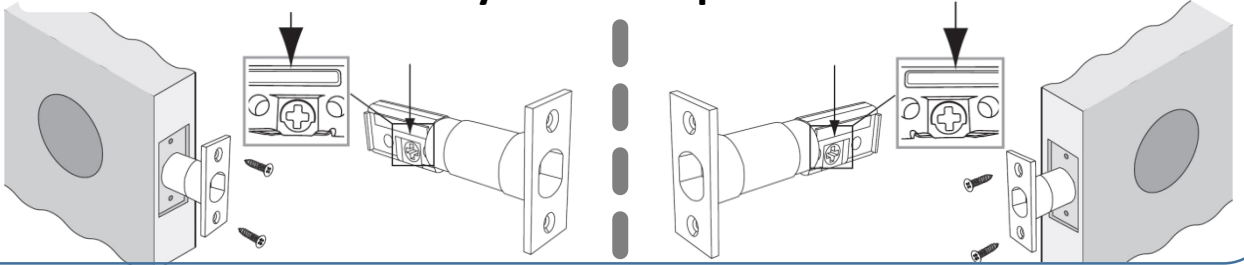
CHECK THE DOOR DIRECTION



Scan this QRCode to get the video guide



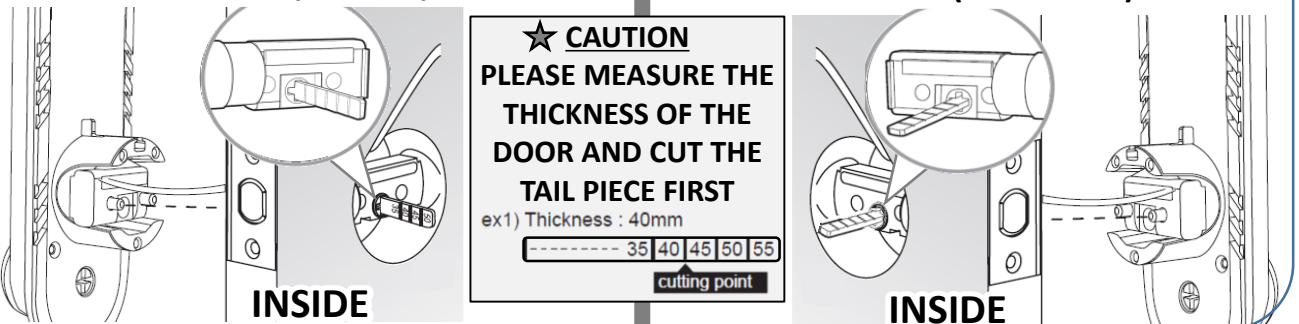
1- Deadbolt Line always at the top



2- Tail Piece Orientation

LEFT (Vertical)

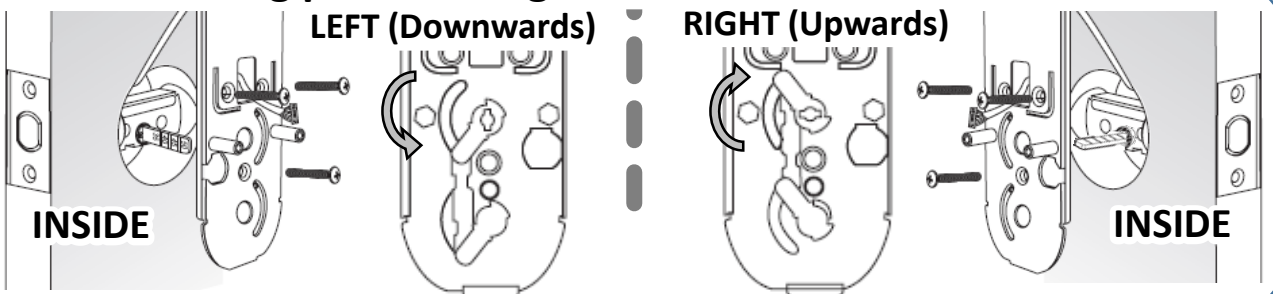
RIGHT (Horizontal)



3- Mounting plate setting for the TAIL PIECE

LEFT (Downwards)

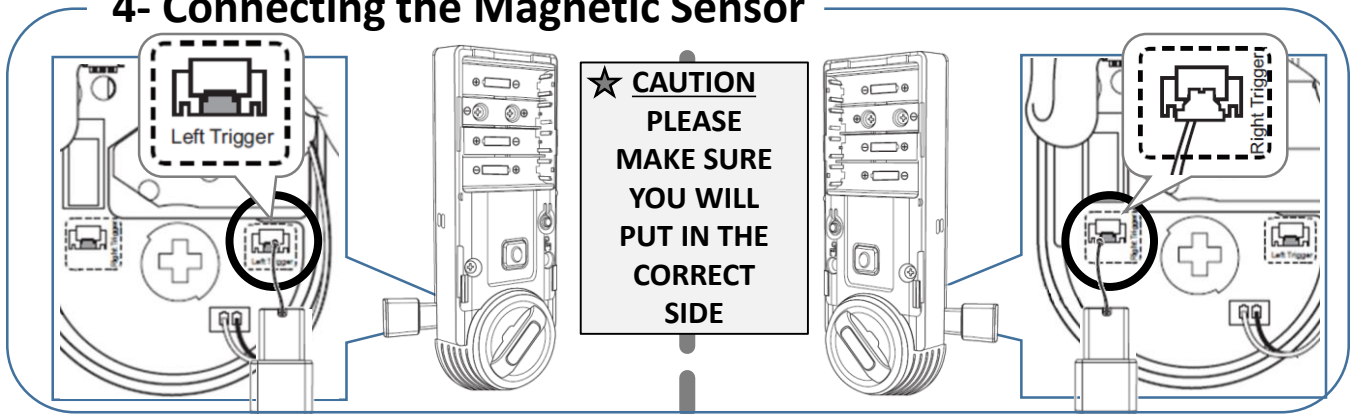
RIGHT (Upwards)



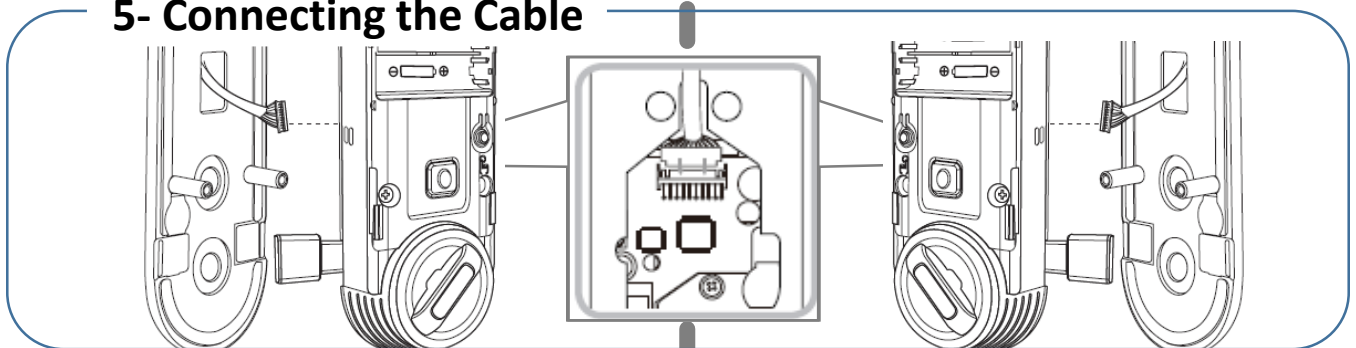
LEFT-HANDED DOOR

RIGHT-HANDED DOOR

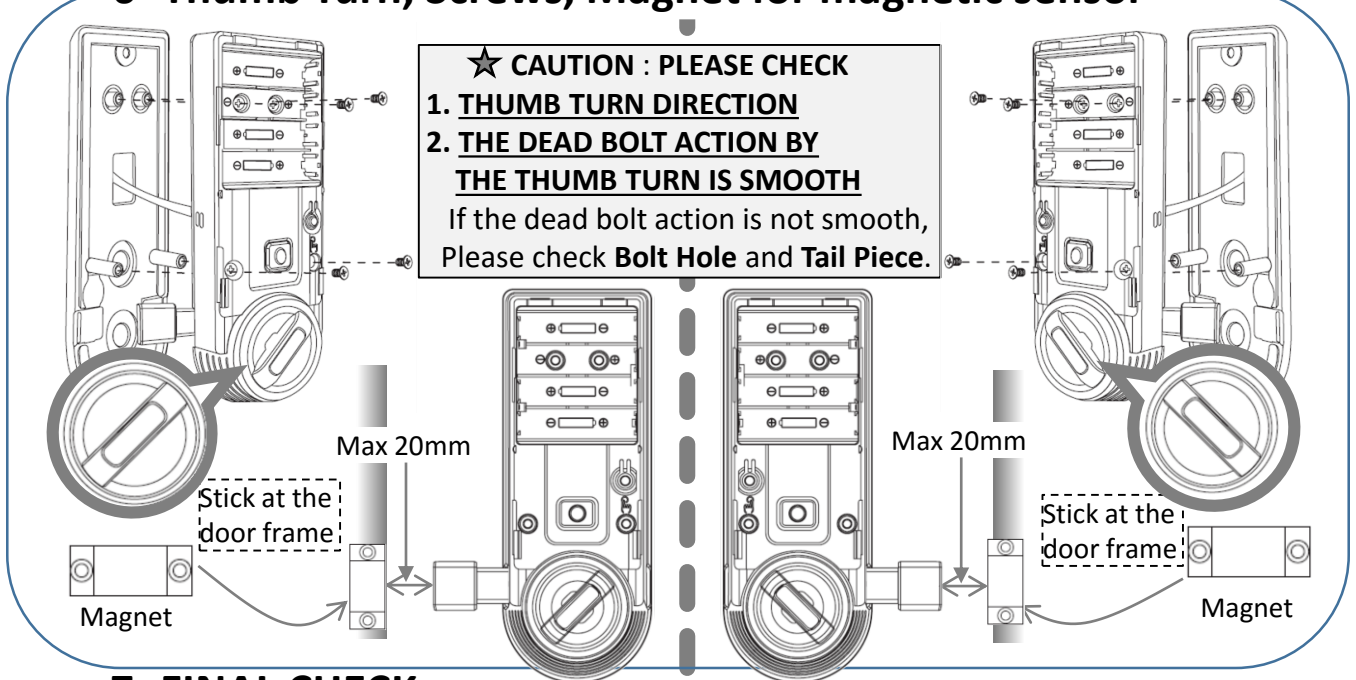
4- Connecting the Magnetic Sensor



5- Connecting the Cable



6- Thumb Turn, Screws, Magnet for magnetic sensor



7- FINAL CHECK

1. Install 4 batteries. A Melody will sound when all 4 batteries are installed correctly.
2. Close the door to detect the magnetic sensor. You can hear the beep sound when the magnetic sensor detects. After that, press [OPEN/CLOSE] button to check whether the dead bolt works properly.
3. Stick the magnetic sensor with attention on the distance.

CAUTION : The gap between the door side and the door-frame magnetic sensors should be close enough to be detected.

For support, please call this number **1-800-665-397**

For tutorial videos & manuals please go to our website: www.digitaldoorlocks.com.au